

**Logica | Collection Président**  
**Design by Bruno Moinard**

*What is luxury other than smoothing away certain details, making even hidden things precious, being generous in the art of detail and finish, and offering something finely-worked and made-to-measure?*

*Steve McQueen*

## A contemporary collection for the most luxury and intimate contract spaces

The Logica company, part of the Italian industrial group Interna, specialised in top-of-the-range furnishing for the contract, hospitality and office sectors, proposes since 1989 several ranges of furniture for offices, from management level to staff level, supplying complete turnkey design projects for workplaces, from feasibility studies to design and production of all the components, right up to delivery and after-sales service, all around the globe.

Today Logica is proud to present an emblematic work of the renowned French Maestro Bruno Moinard, the designed ad hoc Collection *Président*.

The monograph presents twenty pieces of furniture - tables, coffee tables, desks, armchairs, sofas, consoles, cabinets, lamps and accessories - specifically created for those more luxury and intimate contract spaces such as hotel suites, lounge clubs, VIP areas, hotel apartments, business centres, presidential and generally high level managerial offices.

As for all Logica collections, this line is completely flexible and customizable in terms of dimensions, materials and finishes, to adapt to different spaces and meet any design requirement.



## Collection Président

Marked by a sophisticated contemporary style expressed in pure lines, through an elegance that refuses any form of ostentation, the collection pays great attention to the harmony of proportions, to the chromatic unity, to an unusual mix of materials, to the high quality of manufacture and to even the most hidden detail. The result is a discreet luxury, a simple richness: the charm of the essential is just a first impression that conceals the great attention to details shortly after discovered.



## Bruno Moinard

### Paris

Warm simplicity, elegance and timelessness... Bruno Moinard's work is centred around these three themes; as well as an approach to luxury which is here a way of perceiving things. From the beginning, the agency has thus stayed true to its basic philosophy: to interpret a place without erasing its soul, to bring warmth to a very austere interior, to create surprises, to ignore fashions. In other words, to act like there was nothing there, in order to remain classic, timeless and without ever preaching.

Born in Dieppe in 1956, following his graduation from the École Nationale Supérieure des Arts Appliqués et des Métiers d'Art and after a first experience with Hubert Cormier for the famous Troisgros restaurant in Roanne, Bruno Moinard joined Andrée Putnam's and Jean-François Bodin's team in the architecture firm Écart and Écart International in 1979, bringing with him the drawing skills he'd honed over the years. This 15-year adventure would lead to him becoming Andrée Putnam's senior partner and participating notably in one of the firm's most memorable construction projects, that of the legendary Concorde airplane. For ten years he oversaw Écart's Research & Design department of 15 people and, in 1995, Bruno Moinard realized a long-held aspiration by founding his own agency, 4BI. And, since 1996, his name is associated on a worldwide basis with the Cartier fashion house, for which Bruno Moinard created the design and layout of many exhibitions and the new Cartier concept design for the numerous boutiques of the fashion house throughout the world. Bruno Moinard has a vision and an ability not just to reconcile but to weave together tradition and modernity: his style imposes itself as unpretentious, refined and elegant, rendering a minimalist modernity albeit conserving warmth; reflection of the creator himself, a discreet luxury obtained through the perfection of the most minute detail.

# Logica | Collection Président

*design by Bruno Moinard*

## Upholstery

Orbine   Armchair	26
Solari   Sofa	30

## Tables

Borgeo   Working Table	34
Luri   Meeting Table	42
Penta   Small table	46

## Casegoods

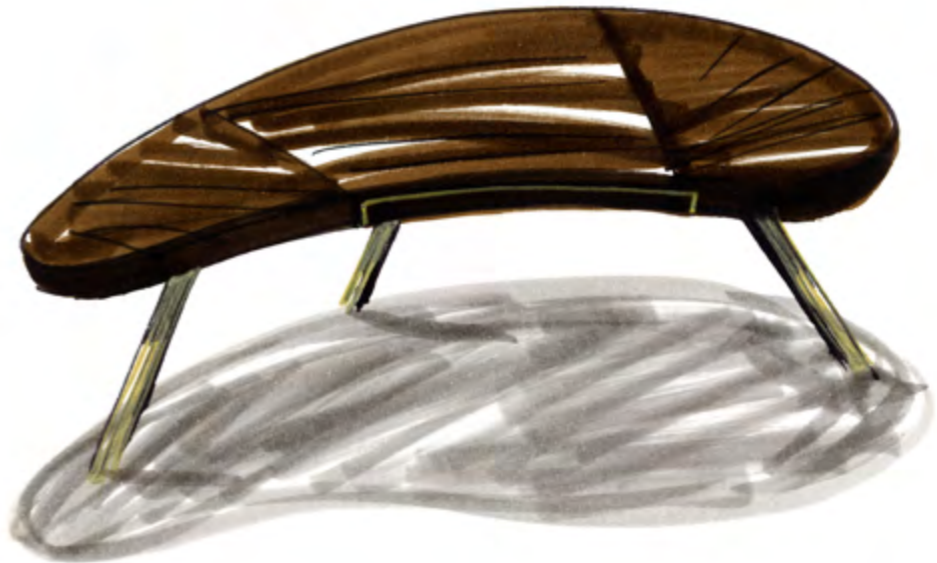
Figaro   Side Unit	50
Leccie   Coffe	56
Levie   Console	62
Calvie   Bookshelves	66
Corti   Screen	72
Talasani   Easel	74

## Lamps

Peri   Lamp Table	76
Tavera   Floor Lamp	80
Cauro   Floor Lamp	82

## Addendum

Materials & Finishes	84
Photo Index	88
Logica Office Living	90
The Group	92









## Materials Board | Light

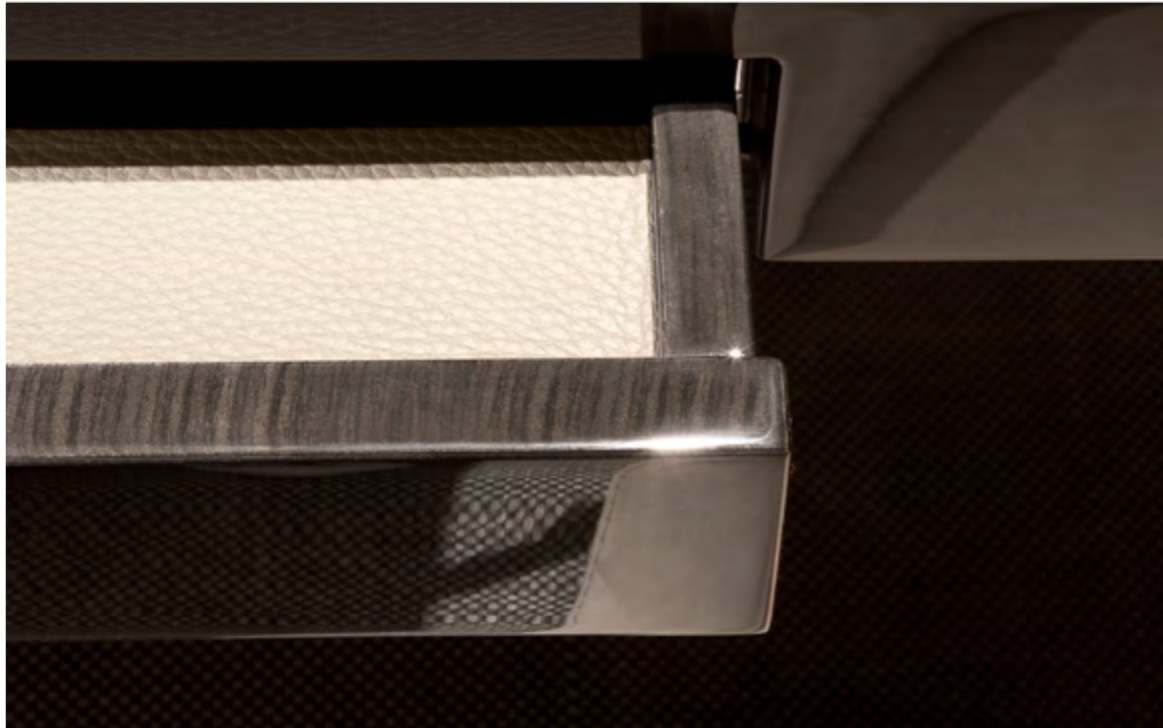


Materials Board | Dark







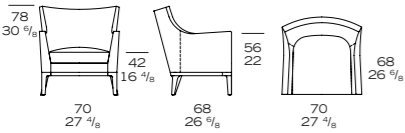


# Orbine | Lounge Armchair



# Orbine | Lounge Armchair

L.PR.001.01

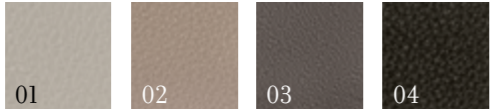


### FINISHES

structure  
dark stained  
solid wood DS



upholstery  
full grain  
leather  
P2.LE.001



Any design requirement can be satisfied by choosing customized materials, finishes and dimensions.

Armchair with a solid oakwood base with plywood panels covered with polyurethane expanded foam. Back and seat are padded with flexible foam with different densities.



# Solari | Sofa

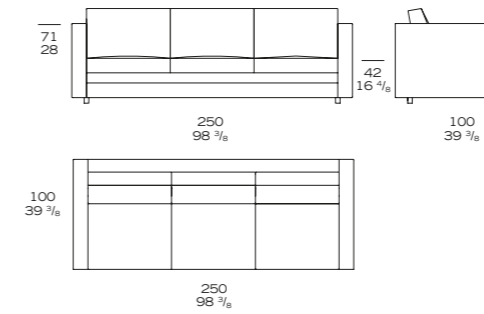




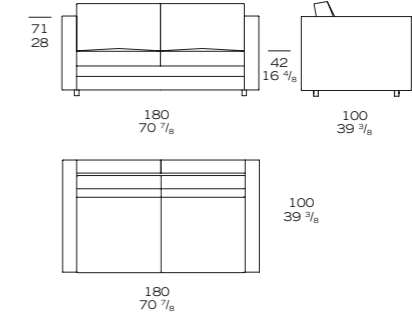


# Solari | Sofa

L.PR.002.01



L.PR.002.02



## FINISHES

### Light version

frame  
full grain  
leather  
P2.LE.002



cushions  
fabric  
T7.VE.005

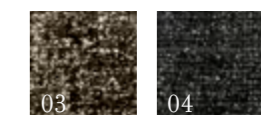


### Dark version

frame  
full grain  
leather  
P2.LE.002



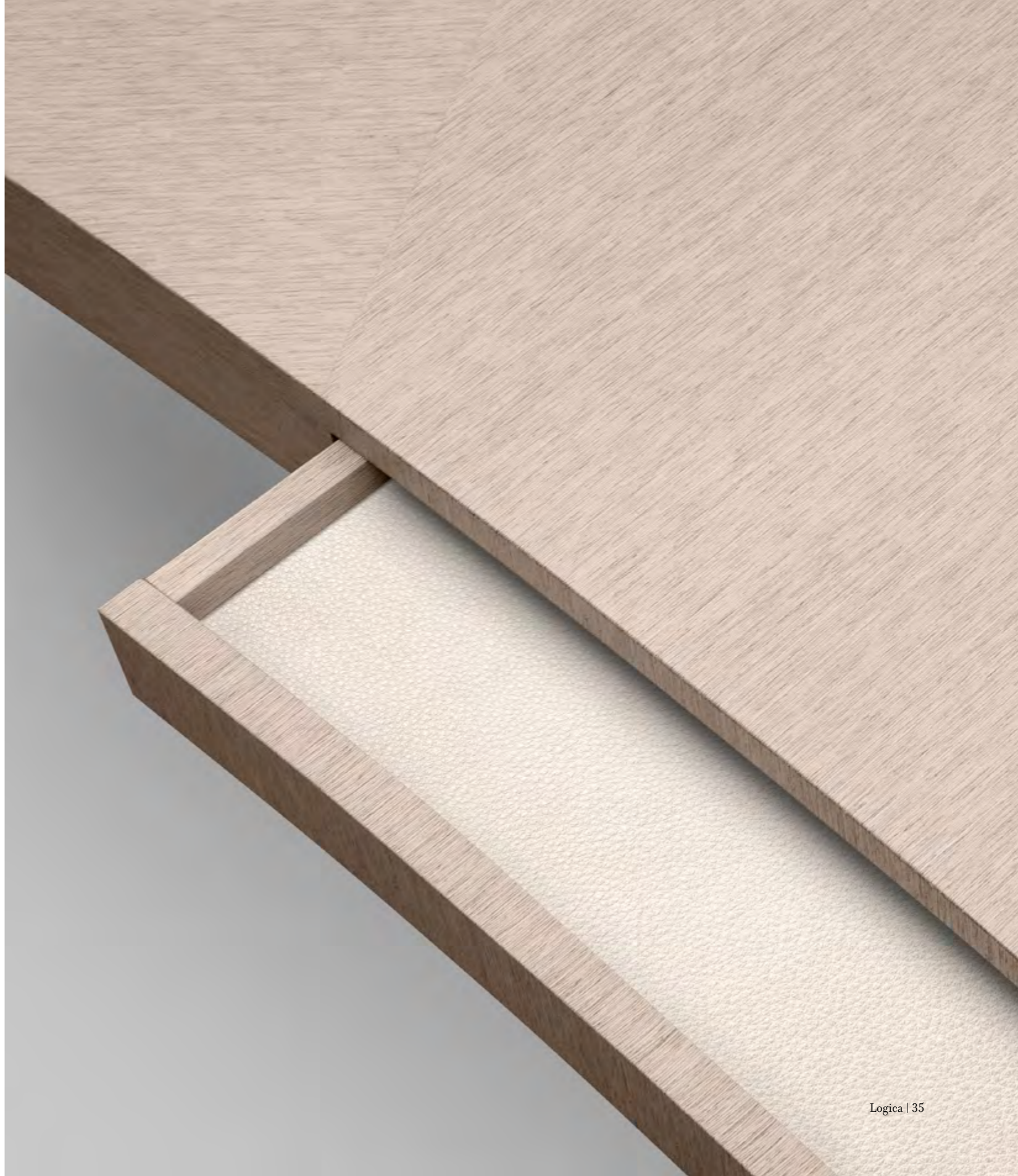
cushions  
fabric  
T7.VE.005



Any design requirement can be satisfied by choosing customized materials, finishes and dimensions.

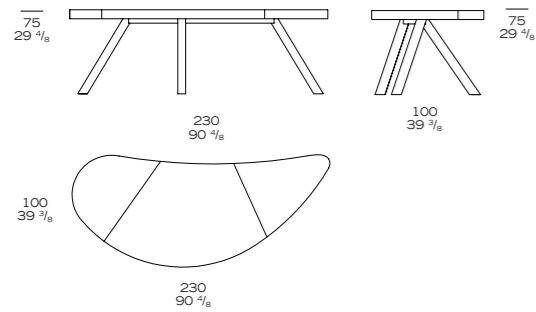
Series of sofas with two lengths, made of plywood panels covered with polyurethane expanded foam. The seat is padded with flexible foam with a special top level made of a viscous-elastic foam. The back cushions are made of flexible foam and goose feathers. The feet have a varnished bronze finish.

Borgeo | Working Table

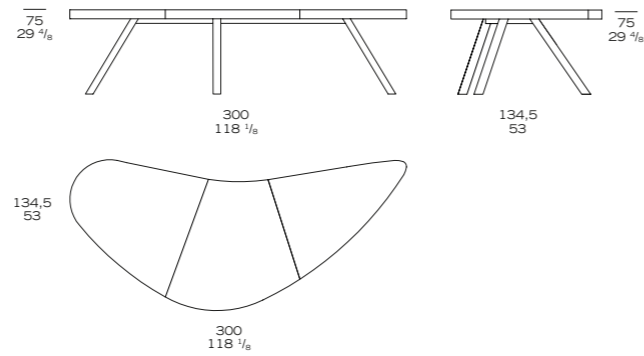


# Borgeo | Working Table

L.PR.003.01



L.PR.003.02



## FINISHES

Light version

top  
stained light  
vener SL



structure  
bronze BR



drawer  
full grain  
leather  
Pl.LE.002



Dark version

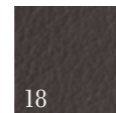
top  
stained dark  
vener SD



structure  
bronze BR



drawer  
full grain  
leather  
Pl.LE.002



Any design requirement can be satisfied by choosing customized materials, finishes and dimensions.

Series of rectangular and bean shaped tables with veneered fibreboard top and steel base. The tops are made of honeycomb boards with a millerays veneer with irregular vein. The two veneers and finishes available are: light grey bleached oakwood with a mat transparent coat and dark grey oakwood with a 100 gloss finish. The drawer, with leather bottom, is mounted on metal full extension slides with dampers or on revolving ball bearing ones. The base is made of galvanized hexagonal tube with a brushed bronze finish; the legs have adjustable feet.



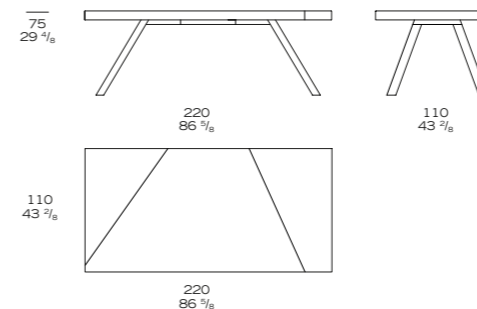
Borgeo | Table



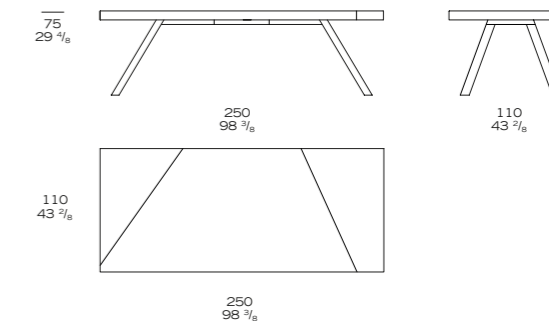


# Borgeo | Table

L.PR.003.03



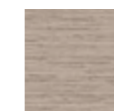
L.PR.003.04



## FINISHES

### Light version

top  
stained light  
veneer SL



structure  
bronze BR



drawer  
full grain  
leather  
PI.LE.002

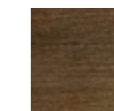


### Dark version

top  
stained dark  
veneer SD



structure  
bronze BR



drawer  
full grain  
leather  
PI.LE.002



Any design requirement can be satisfied by choosing customized materials, finishes and dimensions.

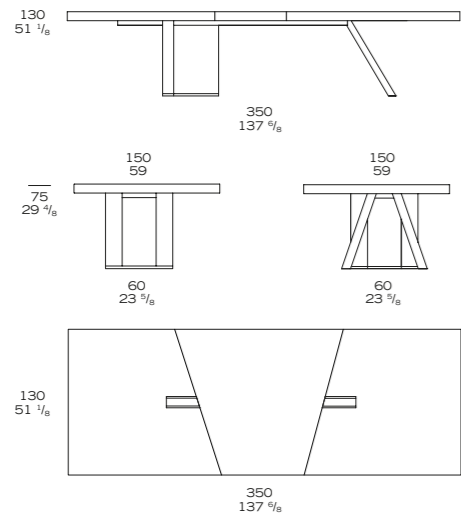
Series of rectangular and bean shaped tables with veneered fibreboard top and steel base. The tops are made of honeycomb boards with a millerays veneer with irregular vein. The two veneers and finishes available are: light grey bleached oakwood with a mat transparent coat and dark grey oakwood with a 100 gloss finish. The drawer, with leather bottom, is mounted on metal full extension slides with dampers or on revolving ball bearing ones. The base is made of galvanized hexagonal tube with a brushed bronze finish; the legs have adjustable feet.

Luri | Meeting Table

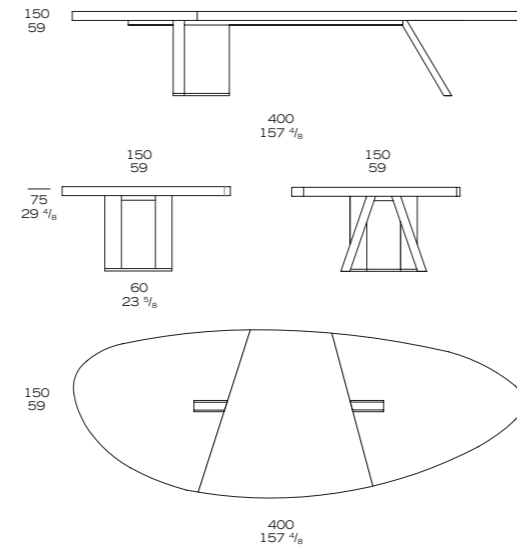


# Luri | Meeting Table

L.PR.004.01



L.PR.004.02



## FINISHES

Light version

top & column  
stained light  
vener SL



structure  
bronze BR



Dark version

top & column  
stained dark  
vener SD



structure  
bronze BR



Any design requirement can be satisfied by choosing customized materials, finishes and dimensions.

Series of rectangular and bean shaped tables with great dimensions with veneered fibreboard top, a metal frame and a wooden base that can be wired. The tops are made of honeycomb boards with a millerays veneer with irregular vein. The two veneers and finishes available are: light grey bleached oakwood with a mat transparent coat and dark grey oakwood with a 100 gloss finish. The tops are equipped with a cable port with a flush door with the same finish as the top. The wooden base is equipped with a door to allow an easy access to the wiring. The metal structure is made of galvanized hexagonal tube with a brushed bronze finish; the legs have adjustable feet.



Penta | Small Table

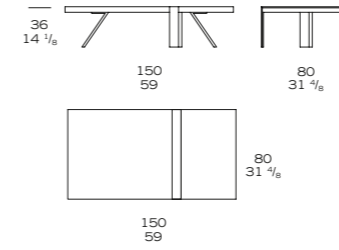




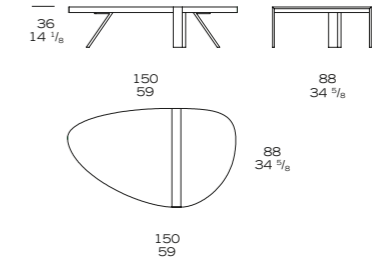


## Penta | Small Table

L.PR.005.01



L.PR.005.02



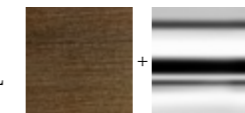
### FINISHES

Light version

top  
brushed light  
wood WL

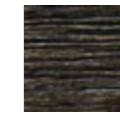


metal parts  
bronze BR +  
polished nickel NL

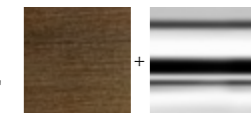


Dark version

top  
brushed dark  
wood WD



metal parts  
bronze BR +  
polished nickel NL



Any design requirement can be satisfied by choosing customized materials, finishes and dimensions.

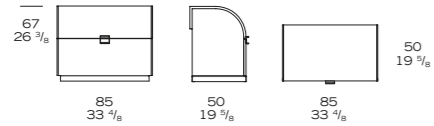
Series of rectangular and bean shaped coffee tables with veneered fibreboard top and metal base. The tops are made of honeycomb boards with a 3D striped and brushed veneer with irregular vein. The two veneers and finishes available are: brushed bleached conifer wood with mat transparent coat and brushed dark grey oakwood with a 100 gloss finish. The base is made of two paired galvanized rectangular sections with brushed bronze and polished nickel finish.

Figaro | Side Unit



# Figaro | Side Unit

L.PR.006.01



## FINISHES

Light version

frame  
stained light  
veneer SL



metal parts  
bronze BR



leather parts  
full grain  
leather  
P1.LE.002



Dark version

frame  
stained dark  
veneer SD



metal parts  
bronze BR



leather parts  
full grain  
leather  
P1.LE.002



Any design requirement can be satisfied by choosing customized materials, finishes and dimensions.

Side unit for the working table, with a frame made of veneered fibreboard and a curved shutter made of plywood. The two veneers and finishes available are: light grey bleached oakwood with a mat transparent coat and dark grey oakwood with a 100 gloss finish. Decorative profiles and handles are made of galvanized steel with a brushed bronze finish. The unit is equipped with a lower drawer with a leather front, middle drawer with a wooden veneered front and a leather pull-out tray. The unit is supplied ready for cabling that is not included.



Figaro | Side Unit



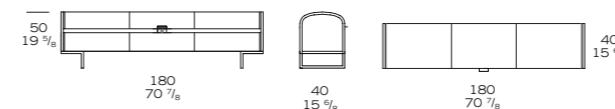
Leccie | Coffer





# Leccie | Coffer

L.PR.007.01



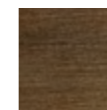
## FINISHES

Light version

frame  
brushed light  
wood WL



metal parts  
bronze BR

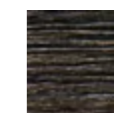


leather parts  
full grain  
leather  
P1.LE.002



Dark version

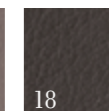
frame  
brushed dark  
wood WD



metal parts  
bronze BR



leather parts  
full grain  
leather  
P1.LE.002



Any design requirement can be satisfied by choosing customized materials, finishes and dimensions.

Container unit with a frame made of veneered fibreboard and a curved shutter made of plywood upholstered in leather with pull-out tray with dividers upholstered in leather. The two veneers and finishes available are: brushed bleached conifer wood or dark grey oakwood with a mat transparent coat. Feet, decorative profiles and handles are made of galvanized steel with a brushed bronze finish.

Leccie | Coffer



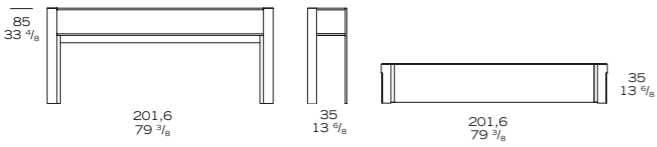
Levie | Console





# Levie | Console

L.PR.008.01

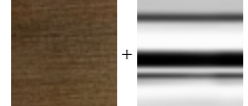


### FINISHES

shelves  
back painted glass  
| sand VS



metal parts  
bronze BR +  
polished nickel NL



Any design requirement can be satisfied by choosing customized materials, finishes and dimensions.

Rectangular console with two glass shelves and steel structure. The shelves are made of 12 mm back painted extra clear glass with a brushed finish on the top. The structure is made of galvanized section bars with a brushed bronze and polished nickel finish.



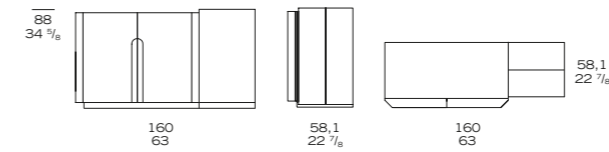
Calvie | Credenza





# Calvie | Credenza

L.PR.009.01



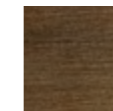
## FINISHES

Light version

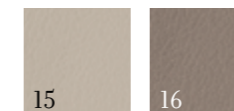
structure  
brushed light  
wood WL



metal parts  
bronze BR

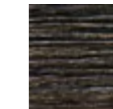


leather parts  
full grain leather  
PI.LE.002

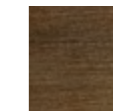


Dark version

structure  
brushed dark  
wood WD



metal parts  
bronze BR



leather parts  
full grain leather  
PI.LE.002



Any design requirement can be satisfied by choosing customized materials, finishes and dimensions.

Multifunction container unit with a frame made of fibreboard veneered or upholstered in leather. The two veneers and finishes available are: brushed bleached conifer wood or dark grey oakwood with a mat transparent coat. The unit is composed by a deeper section with double doors with a leather groove and by a side unit made of two identical parts, one being a rotating storage-door upholstered in leather with a 180° opening and holder in brushed bronze finish.

Internally the unit is completely upholstered in leather, with a curved back and build-in led lights and lighting sensor on the middle shelf. The credenza is supplied fully cabled.

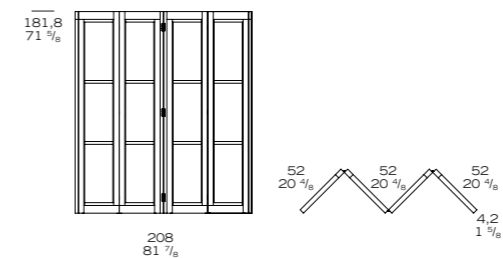
Calvie | Credenza





# Corti | Screen

L.PR.010.01



## FINISHES

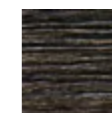
Light version

Dark version

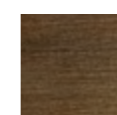
structure  
brushed light  
wood WL



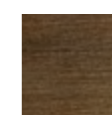
structure  
brushed dark  
wood WD



metal parts  
bronze BR



metal parts  
bronze BR



fabric  
banana fiber  
T7.TE.001.01



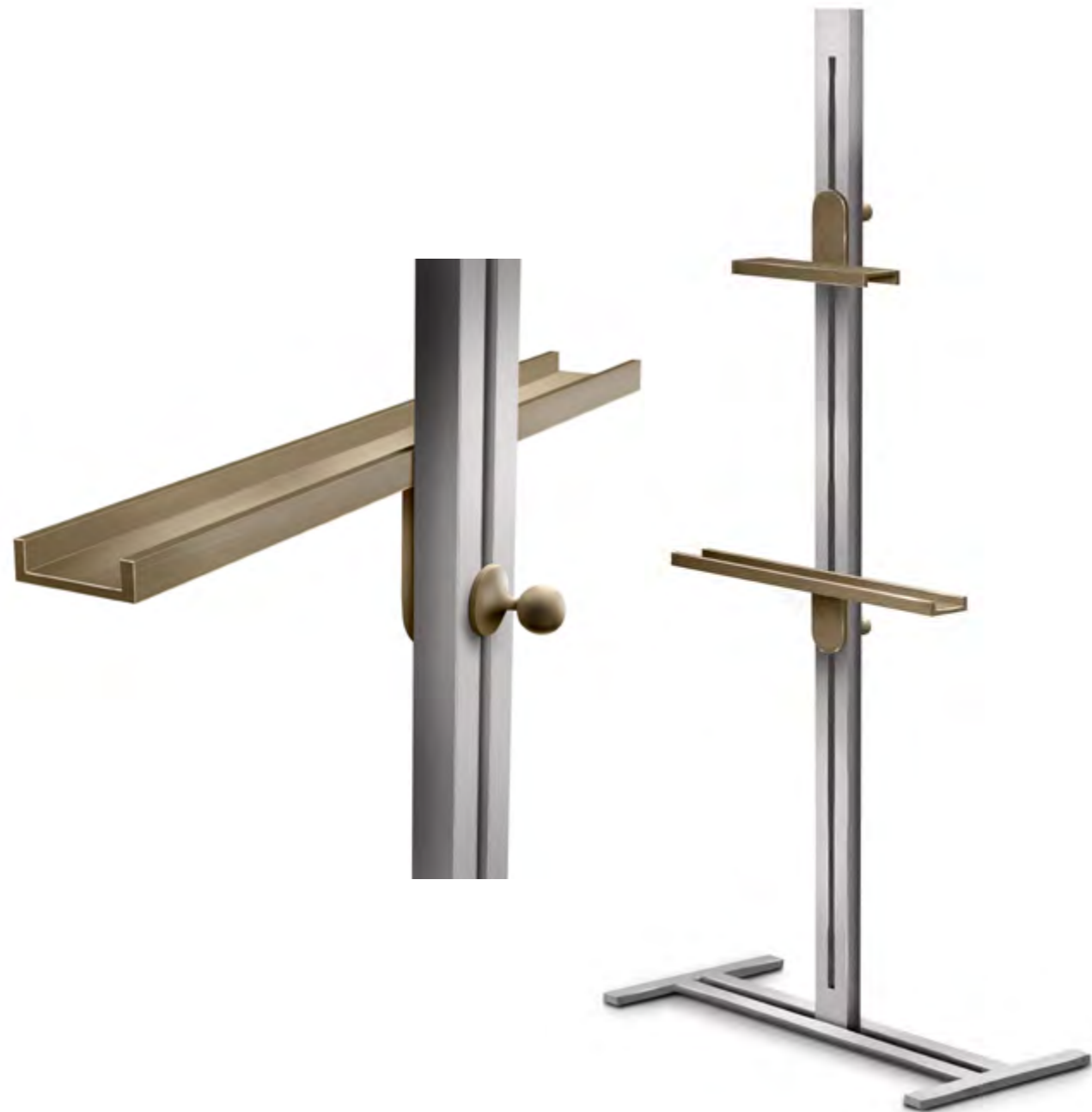
fabric  
banana fiber  
T7.TE.001.02



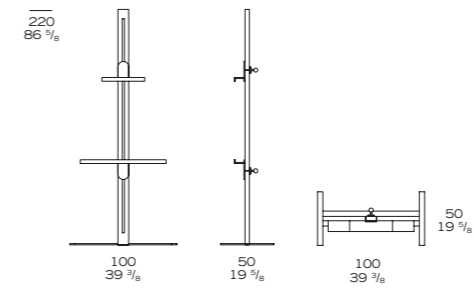
*Any design requirement can be satisfied by choosing customized materials, finishes and dimensions.*

Double faced screen with a solid wood structure and inserts made of a translucent banana tree fibre fabric and hidden hinges with bronze finish. The two veneers and finishes available are: brushed bleached conifer wood or dark grey oakwood with a mat transparent coat. All panels on both sides are decorated with metal frames with a brushed bonze finish.

# Talasanì | Easel

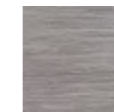


L.PR.011.01

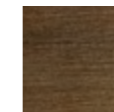


## FINISHES

structure  
titanium TT



supports  
bronze BR



Any design requirement can be satisfied by choosing customized materials, finishes and dimensions.

Art support completely made of metal. The structure has a titanium finish whereas the shelves and the decorations are made with a brushed bronze finish.

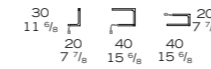
Peri | Lamp Table



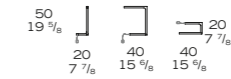


# Peri | Lamp Table

L.PR.012.01

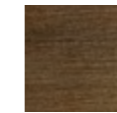


L.PR.012.02

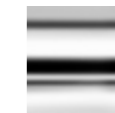


## FINISHES

structure  
bronze BR



structure  
polished  
nickel NL



Any design requirement can be satisfied by choosing customized finishes.

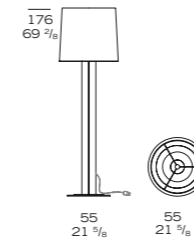
The structure is made of galvanized metal tube with a brushed bronze or polished nickel finish. It operates with 30W/m 3000 K° led lights, dimmable by means of a touch sensor on the base. The lamp is available in two models with different heights and lengths.





# Tavera | Floor Lamp

L.PR.013.01



## FINISHES

Light version

Dark version

lampshade  
silk  
T7.DE.003.01



lampshade  
silk  
T7.DE.003.02



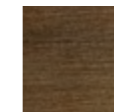
column  
leather  
P1.LE.002.16



column  
leather  
P1.LE.002.13



metal parts  
bronze BR



metal parts  
bronze BR



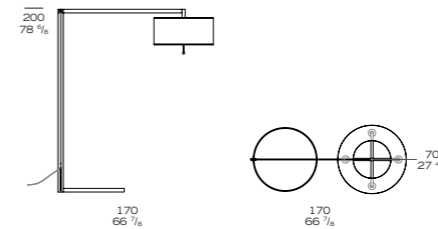
Any design requirement can be satisfied by choosing customized finishes.

The frame is made of wood with a fireproof leather upholstery and a conical lampshade made of raw silk coupled with pvc. It operates with a low energy consumption, 30W/2700 °K dimmable light bulb. The dimmer is located on the frame. The base and the decorative elements are made of galvanized metal with a brushed bronze finish.

# Cauro | Floor Lamp



L.PR.014.01



## FINISHES

lampshade  
basaltex  
T7.DE.004.01



dimmer  
murano glass  
GL



metal parts  
bronze BR



Any design requirement can be satisfied by choosing customized finishes.

Lamp completely made of galvanized metal with brushed bronze finish and a double cylindrical lamp shade made of Basaltex coupled with white pvc. It requires low energy consumption 7W/2700°K light bulbs, dimmable by means of a metal rod with a decorative Murano glass sphere.

## General Note

The collection is a flexible 'tool' for those who create one-off products and projects, and as such each item in the catalogue can be produced in a limitless range of materials & finishes. The materials and finishes here shown therefore refer only to our codified proposals. For each item we can also use customer-supplied materials or other materials and finishes different from those selected, but their use will be evaluated on individual basis and will take into consideration the technical feasibility and the end-use of the products.

## Note on Samples

The samples shown here may differ slightly from the actual product. Upon request we can send a sample book with the actual materials used. As far as wood is concerned, even the real samples, owing to the natural qualities of wood, don't guarantee that used materials match exactly the samples. Furthermore, we cannot guarantee that items produced using the same type of wood will always display uniformity in colour and grain. Exposure to light and the natural ageing process mean that wood is subject to changes in colour.

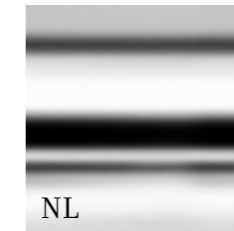
# Materials & Finishes

## Metals



BR

bronze



NL

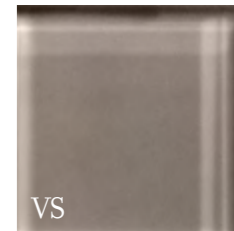
polished nickel



TT

titanium

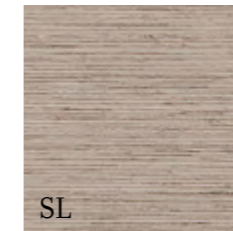
## Glass



VS

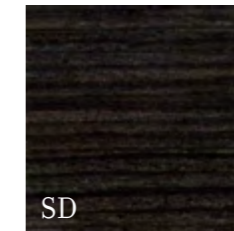
back painted  
glass / sand

## Woods



SL

stained light  
veneer / matt



SD

stained dark  
veneer / high gloss



DS

dark stained solid  
wood / matt



WL

brushed light  
wood / matt



WD

brushed dark  
wood / matt

# Materials & Finishes

## Fabrics



velvet



velvet



velvet



velvet



banana fiber



banana fiber



silk

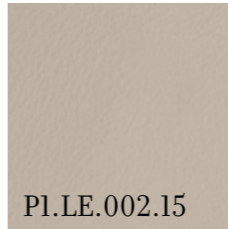


silk



basaltex

## Leathers



full grain leather  
th. 1.00-1.20



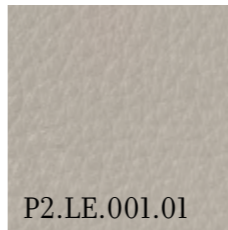
full grain leather  
th. 1.00-1.20



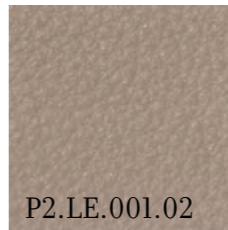
full grain leather  
th. 1.00-1.20



full grain leather  
th. 1.00-1.20



full grain leather  
th. 1.30-1.50



full grain leather  
th. 1.30-1.50



full grain leather  
th. 1.30-1.50



full grain leather  
th. 1.30-1.50



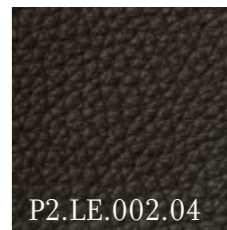
full grain leather  
th. 1.40-1.60



full grain leather  
th. 1.40-1.60



full grain leather  
th. 1.40-1.60



full grain leather  
th. 1.40-1.60

# Photo Index

**Orbine** | Armchair  
page 26



**Solari** | Sofa  
page 30



**Borgeo** | Working Table  
page 34



**Calvie** | Credenza  
page 66



**Corti** | Screen  
page 72



**Talasan** | Easel  
page 74



**Borgeo** | Table  
page 38



**Luri** | Meeting Table  
page 42



**Penta** | Small Table  
page 46



**Peri** | Table Lamp  
page 76



**Tavera** | Floor Lamp  
page 80



**Cauro** | Floor Lamp  
page 82



**Figaro** | Side Unit  
page 50



**Leccie** | Coffier  
page 56



**Levie** | Console  
page 62



# Logica

## Office Living

Founded in 1989 and taken over by the Interna Group in 2006, the Logica name is now considered a reference for the supply of interior design solutions for offices and congress centres. Right from the start of its story, and even more so today, the Logica trademark has been proposed to those who operate in the office sector, its mission being to supply high quality products and a reliable, personalised service. This has helped create a company which is extremely versatile when seeking, proposing and creating tailor-made solutions designed around its clients, which means freedom from the limits normally set by mass-produced products.

The Interna Group, on the other hand, has been operating for more than 20 years in the luxury interior design sector, and boasts an international reputation in the design of turnkey projects for hotels, restaurants, congress centres, boutiques, private residences, cruise liners and yachts. With the Logica trademark, the company intends diversifying their range of services on offer, as well as accepting the challenge of supplying a personal touch when furnishing contemporary work spaces. Today's office spaces and congress centres require, or rather demand, certain specific characteristics, which range from versatility of the areas involved, to the ability of being able to host a variety of operational requirements.

To respond to these requirements, work environments proposed by Logica are essential, yet warm and personalised, with elegant yet extremely functional forms, made entirely from only solid, quality materials.

## Turn-key

Logica offers a turnkey service for furnishings, finishes and interior decorating. It includes the executive design, production, logistics, installation, testing and an after-sales service, all carried out with full respect for the quality, price and delivery terms formally agreed upon. The company aims particularly at those clients who require not only high quality products - standard or tailor made - but also service with a high technological content.

## Quality Certifications

Turn-key projects have a major environmental and social impact which means that manufacturers should be called upon to follow strict polices regarding environment and employment. Our Group has always been sensitive to the issue of fair and sustainable growth through its integrated certified system Quality ISO 9001 | Environment ISO 14.001 | Ethics Sa 8000.

Logica works to ensure that the process of globalisation is carried out in full recognition of human rights, international labour laws and environmental protection.



## Registered Trademark and Designs

Logica is a registered Trademark<sup>®</sup> since 1989.

All Logica items are copyrighted and covered by registered designs.

## interna®

Interna act under the following specialized companies:

**INTERNA HOLDING SPA** Holding company of the entire Interna Group; administrative, financial, purchasing, logistics, human resources services for all companies of the Group.

**INTERNA CONTRACT SPA** One-off furnishing products for unique turnkey projects covering the whole luxury market: hotels, bars & restaurants, museums, offices, stores, homes, yachts, casinos, health farms, private clinics, cruise ships and yachts. A complete package of services including financing, planning, production, project management, logistics, installation and after sale assistance.

**INTERNA COLLECTION SRL** An innovative range of furniture and furnishings for the hospitality and contract industry, involving over 300 concepts. Three different high profile design lines, Traditional, Transitional and Contemporary and four dedicated collections: Les Grands Classiques de Jacques Garcia, Anglodutch by FG stijl, Bedroom Stories, five new hotel room concepts, Echoes by Khuan Chew. Extreme flexibility: all the items can be customized in terms of materials, finishes and dimensions.

**INTERNA ASIA PACIFIC, LTD** Implementation of Interna products and services on the Asian market. Turn key projects, one-off furnishing products, standard furnishings, office furniture.

## logica®

One-off furnishing solutions for the world of the office to satisfy any design requirement. Design collections for operative and executive offices, a presidential line, all in accordance with international regulations regarding materials and functional features.

## interna real estate®

A complete package of services - real estate brokerage, project development, valuation & due diligence, financial engineering, master & space planning, operator selection, project management, real estate consulting - to conceive and successfully execute any real estate project, especially in the hotel sector.

We had the pleasure to work with





#### HEADQUARTERS

via G. Galilei, 9/A  
33010 Tavagnacco  
(Udine) Italy  
Phone: +39 0432 643 211  
www.logica.eu | logica@logica.eu  
www.interna.it | interna@interna.it

#### LOGICA ASIA PACIFIC

425 Yanping Lu, Continuity Building,  
Unit 308 | Jing An District 200042  
Shanghai P. R. of China  
Phone +86 (0)21 62712977  
www.interna.asia | interna.asia@interna.it

#### WORLDWIDE OFFICES

Australia, Austria, Finland,  
France, Germany, India, Japan,  
Morocco, New Zeland, Russia,  
Singapour, Spain, The Netherlands,  
UAE, UK, USA, Vietnam

This volume is edited by Derna Del Stabile Travan  
Photos Interna Holding SpA Image Bank © All rights reserved  
Photoshootings: Emanuele Paravano for Interna Holding  
except Bruno Moinard portrait page 6: Xavier Béjot  
Printed in Italy by Grafiche Antiga | November 2014  
by Logica Srl, Tavagnacco (Ud), Italy 2014. All rights reserved ©