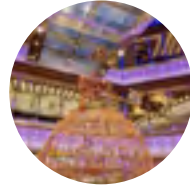


INTERNA CONTRACT  
THE COMPENDIUM II  
SELECTED PROJECTS  
2008-2015

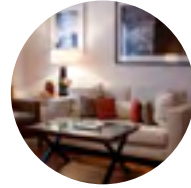
## SELECTED PROJECTS 2008-2015 | INDEX



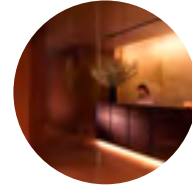
2015  
Four Seasons Hotel  
Bahrain Bay  
Kingdom of Bahrain



2014  
Costa Diadema  
Cruise ship



2014  
Four Seasons Hotel Milano  
Milan | Italy



2014  
Four Seasons Hotel  
Milano | SPA  
Milan | Italy



2013  
Qingdao Tianji Gulf  
French Villa  
China



2013  
Armani Café  
Abu Dhabi | UAE



2013  
The Chedi Andermatt  
Spa & Gym  
Andermatt | Switzerland



2012 | 2013  
Mama Shelter  
Marseille/Lyon  
France



2012 | 2013  
Qingdao Tianji Gulf  
Italian Villa  
China



2012  
The NoMad Hotel  
New York | USA



2012  
QT Sydney  
Gowings & State Theatre  
Sydney | Australia



2012  
Private Jet Lounge  
Schiphol Int. Airport  
Amsterdam | The Netherlands



2011 | 2012  
Louis Vuitton Milan  
Montena poleone  
Italy



2011  
Costa Fascinosa  
Cruise ship



2011  
Armani Hotel Milano  
Milan | Italy



2011  
Grand Hotel  
Bordeaux & SPA  
Bordeaux | France

## SELECTED PROJECTS 2008-2015 | INDEX



2011  
Costa Favolosa  
Cruise ship



2011  
Shangri-la  
Paris | France



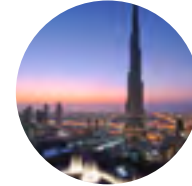
2011  
Mandarin Oriental  
Paris | France



2010 | 2011  
Hyatt Regency  
Düsseldorf | Germany



2010  
Queen Elizabeth  
Cruise ship



2010  
Armani Hotel  
Armani Residences  
Dubai | UAE



2010  
Athenee Palace Hilton  
Bucharest | Romania



2010  
Ducati  
Worldwide



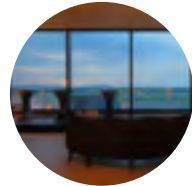
2009  
Hotel La Mamounia  
Marrakech | Morocco



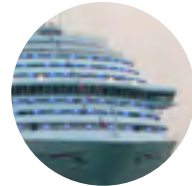
2009  
Prada  
Shop windows for  
boutiques worldwide



2009  
Hotel Athénée  
Paris | France



2009  
Radisson Blu Hotel  
Zürich Airport  
Switzerland



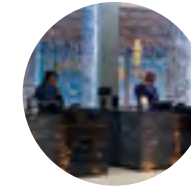
2009  
Carnival Dream  
Cruise ship



2008-2015  
Cartier  
Worldwide



2008  
Danieli  
Venice | Italy



2007 | 2008  
Radisson Blu Hotel  
Dakar | Senegal





# Four Seasons Hotel Bahrain Bay

Kingdom of Bahrain

Interior designer: Waldos | PYR | EDG  
Period: 2015  
Client: Signature Hotels Management Co., SPC  
c/o Four Seasons Hotels Ltd





Build on an isle of its own, the Four Seasons Bahrain Bay hotel is an architectural statement of intent in the heart of Manama, the capital of the Kingdom of Bahrain, 68 floors that reshape the city skyline. Interna supplied part of the loose furnishings for the 273 rooms - including 57 suites - and public areas: chairs, tables, coffee tables, armchairs and casegoods.

The combined design of three studios, Waldo's Designs, Pierre-Yves Rochon and EDG Design, underlines clean but soft lines, with refined and precious finishes such as ebony and leather, high glossy Meranti mahogany and Eramosa marble. The furniture presents a high glossy finish for the wood essences with contrasting metal finishes such as antique brass and polished stainless steel.

Interna respected the highest quality levels of production for all items supplied for this refined hotel that will open in spring 2015.









# Costa Diadema Cruise Ship

Interior designer: Joseph Farcus Architect P.A.  
Period: 2014  
Client: Fincantieri Spa







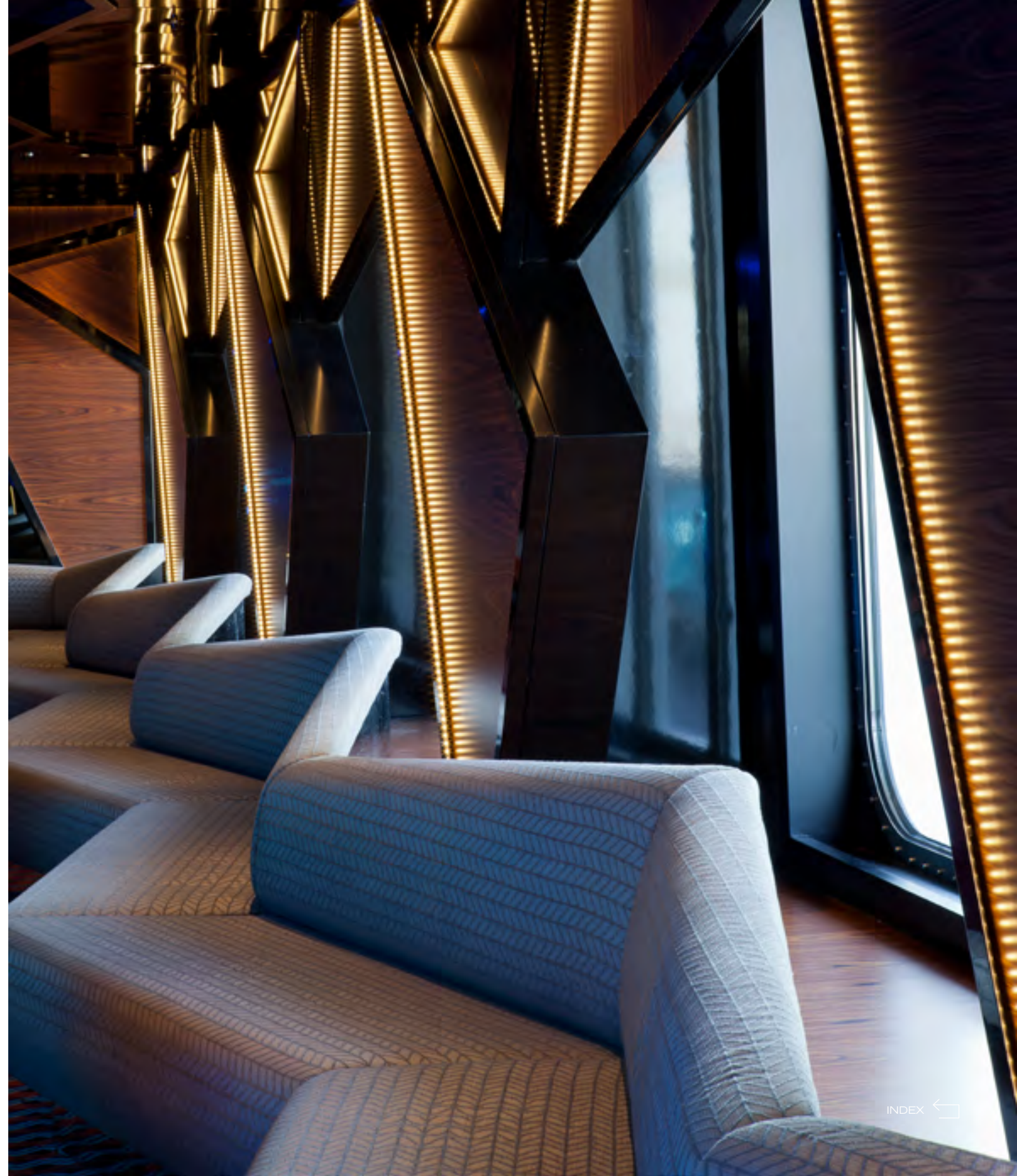


Diadema, the latest Costa cruise ship recently launched in Venice, presents in its most prestigious areas the work of Interna.

The design, work of the American Maestro Joseph Farcus, historic name of the naval interior design with a long lasting connection with the Costa company, foresaw rich and sparkling environments, capable to involve all the senses and create strong emotions.

The contract between Fincantieri and Interna included a 360° turn-key contract for the Aft Lounge, Piano Bar and 4D Cinema areas, with the implementation of floors and wall covering along with the production and installation of all loose and fixed furniture, lighting and artwork.

To allow the guest to enter a dream dimension, Interna created impeccable inlaid floors, seating with refined velvets and leathers, casegoods with an intriguing mix of wood, steel and marble, lighting systems with continuous plays of light for a constant transformation of the environment colours. All works have been carried out in the respect of the highest quality standards as well as of the international naval ruling on safety and health.









Four Seasons  
Hotel Milano  
**Milan**  
Italy

Interior designer: Pierre Yves Rochon  
Period: 2014  
Client: Gruppo Statuto spa









Interna recently implemented the renovation of the historic Four Season Milano, carrying out in less than three months the complete fit out of part of the rooms and of all the suites of the hotel. The skilful maquillage has been designed by the Parisian Pierre Yves Rochon with whom Interna already worked for significant projects such as the Cafè de la Paix e Le Grand in Paris.









All the items supplied have been designed and produced exclusively for this project, in compliance of high quality standards and valorised by the juxtaposition of art pieces produced in different styles and places, of precious curtains and upholsteries, of unusual boiseries and marbles, as if to offer to the guest the cosiness and comfort of a sophisticated metropolitan home.







Four Seasons  
Hotel Milano | SPA  
**Milan**  
Italy

Interior designer: Patricia Urquiola  
Period: 2014  
Client: Gruppo Statuto spa

Spa >  
Fitness





Interna completed in record time - just a couple of months – the complete fit out of spa of the Four Season Milano: more than 300 square meters of wellness with millwork and loose items designed by Patricia Urquiola.





VIP Area, treatment rooms, reception, fitness and locker rooms: from floor to ceiling, from boiseries to loose furniture this areas present a refined mix of walnut and travertine marble, an elegant and sophisticated blend, masterfully implemented by Interna team of experts to meet the demands of the operators and to fulfil the senses of even the more demanding guests. Located in the heart of the fashion city, this spa reopened to the public past autumn and has already become a must for those who want to get away from the urban frenzy while staying in the city.







Qingdao  
Tianji Gulf

French Villa

China

Interior designer: Bilkey Llinas Design  
Period: 2013





For the second time in the span of a few months, Interna brought the Italian manufacture tradition to Qingdao, exclusive location in the northeast of China. Here, after the Italian Villa, in the most trendy area of the city, Interna Italy, in cooperation with the sister company Interna Asia-Pacific, implemented another prestigious residential project, an exclusive “French Villa”, supplying hundreds of exclusively designed and produced casegoods, lamps and upholstered items.

The design, work of the Hong Kong based Bilkey Llinas Design studio, is strongly influenced by Louis XVI style, with eclectic items balanced between neoclassicism and rococo. The client greatly appreciated the many pieces with porcelain inlays and the numerous decorative items matched with the furniture and perfectly meet the taste of the new growing Chinese upper class.

All the items are 100% made in Italy and each single item underlines the Italian manufacture skilfulness made of antique techniques and practised manual skills.







Armani Café  
Abu Dhabi  
UAE

Interior designer: Giorgio Armani  
Period: 2013  
Client: Madark LLC





Interna implemented the turn key fit out of the Emporio Armani Caffè at The Galleria, the hearth of the luxury shopping in Abu Dhabi.  
Interna supplied and installed all the millwork and loose items both for the indoor and outdoor.  
The Exclusive design of Giorgio Armani envisaged dark, extra glossy finishes for the casegoods in contrast with the light upholstery, precious and exclusive, of seats and panelling.  
The Emporio Armani Caffè Abu Dhabi follows closely behind 6 pivotal projects commissioned by the masion Armani to Interna from 2009 to this day.









The Chedi Andermatt  
SPA & Gym  
**Andermatt**  
Switzerland

Interior designer: Denniston  
Period: 2013  
Client: Andermatt Swiss Alps AG





In December 2013 opened its doors to the public the spectacular SPA at the The Chedi Andermatt, luxury hotel located in the namesake town on the Swiss Alps. Interna has been selected as main contractor for this project and supplied turnkey all the interior construction works along with all the millwork and furnishings for the more than 2000 square meters of the structure.











The complete fit out of the thermal and wellness centre, with the fitness area, the spectacular 15 meters swimming pool, the comfortable treatment areas and the wide relax area, engaged Interna for more than ten months.

A highly specialized team installed plasterboards and floorings, ceilings and walls and dealt successfully with the challenge posed by the dimensions and forms of the spaces: very high ceilings and a preponderance of curved walls to be covered with rather unyielding materials such as the stone.







# Mama Shelter Marseille | Lyon

France

Interior designer: Philippe Starck

Period: 2012 | 2013

Client: Mama Marseille sas | SAS Mama Lyon





Trend, casual boutique hotel, the Mama Shelter concept has been conceived by the French philosopher and urbanist Cyril Aouizerate and the Trigano family (ClubMed) with the aim of offering a high-quality experience at low-end prices. With the design of Philippe Starck, the Mama Shelter Marseille and Lyon are the second (April 2012) and third (March 2013) opening after the first hotel of the chain opened in Paris in 2008.

Interna supplied the furniture for these hotels in a very short time. The items produced upon design have a strong playful spirit, with an eclectic mix of forms and materials, and a mix of items and décors: traditional wooden furniture along with pop lamps created with masks of comics characters, high tech bedside tables in steel and traditional plaster-decorated ceilings, all produced with the upmost care and the highest quality standards.







Qingdao  
Tianji Gulf  
Italian Villa  
China

Interior designer: Bilkey Llinas Design  
Period: 2012 | 2013  
Client:





Interna spread the Italian manufacturing culture and style in Qingdao, exclusive vacation seaside location in the northeast of China. Here, within a refined and elegant neighbourhood, Interna, with its sister company Interna Asia-Pacific, supplied hundreds of unique items of furniture and lighting for a charming Italian Villa, a luxurious private residence.





The villa, with a private garden of more than 3000 sq.m., indoor and outdoor swimming pool and gym reflects the elegant atmosphere of the Italian Renaissance and well meets the request of the contemporary affluent consumers of China.

For this villa Interna painstakingly created upon design hundreds of unique items 100% made in Italy. Each single piece is evidence of the ability of Italian craftsmen, who still use traditional techniques and materials and create perfect items, nearly artworks, with selected essences of wood that recall another époque.





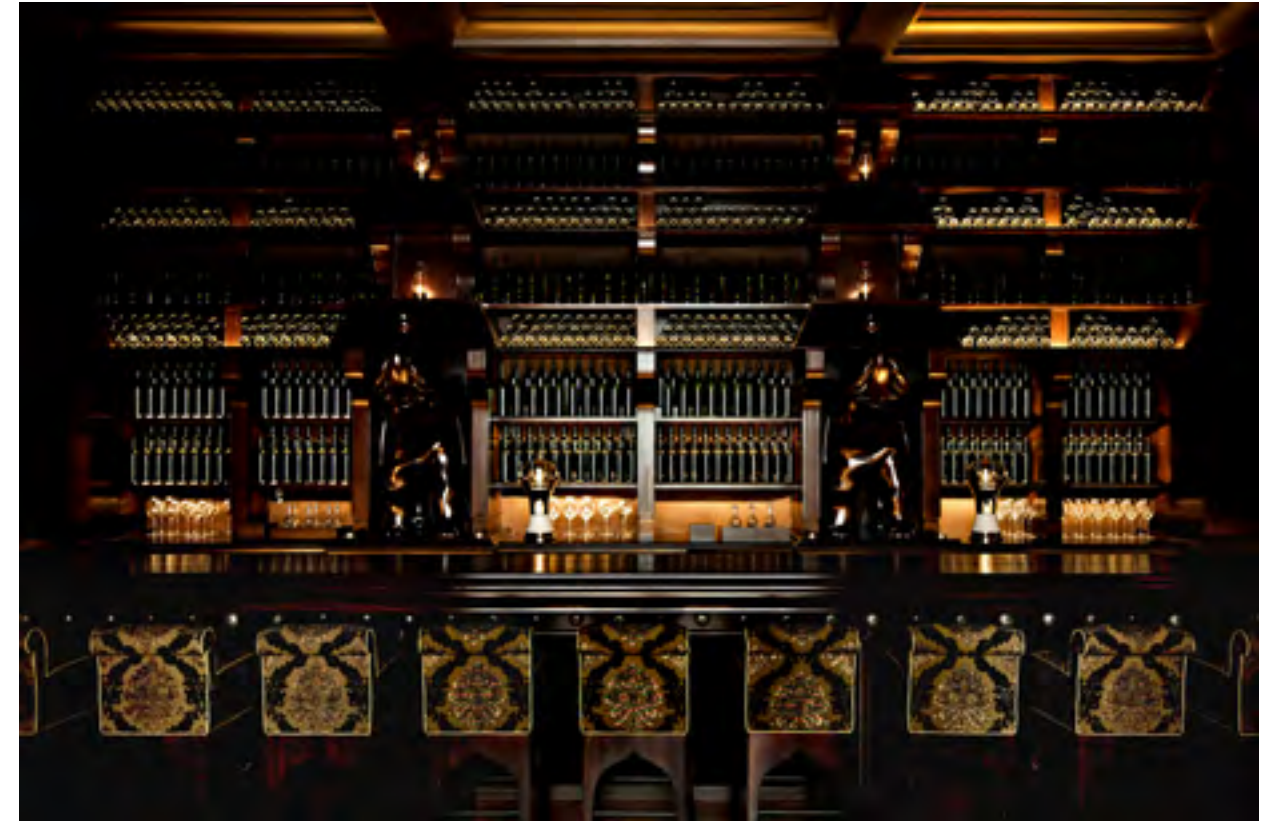




The NoMad  
Hotel  
New York  
USA

Interior designer: Decoration Jacques Garcia  
Period: 2012  
Client: 1170 Broadway Associates, LLC





The NoMad Hotel is housed in a turn of the century Beaux-Arts building that has been fully restored to its original grandeur with interiors by the French designer Jacques Garcia. The hotel is intended as a fresh take on the classic grand hotels of Europe but with a distinct New York sensibility. The 168 rooms are residential in feel and decorated with the Garcia classic, timeless style. Interna long lasting cooperation with Jacques Garcia found its top-level expression within this hotel for which Interna supplied a range of high-end sittings, tables and case-goods both for public areas and for rooms and suites; many of these items have been designed and produced specifically for the project, whereas many others have been selected from Interna furniture catalogue Les Grands Classiques de Jacques Garcia, that counts more than 50 Garcia designs produced with the highest standards of quality and distributed exclusively by the Italian manufacturer since 2005.



The Parlour: its centre is an inviting open hearth space, where guests may observe the preparation of food. Elegant and convivial dinner area, it is a stately room featuring dark oak furnishings and richly textured fabrics.





The restaurant is comprised of a series of rooms surrounding a glass-enclosed atrium. The Atrium is an airy, sunlit space inspired by the great courtyards of Europe. The natural light filtering through the pyramidal glass roof provides an inviting space available for dining throughout the day and evening.





Dining Fireplace: the focal point within this intimate cove is the original fireplace imported from a great French château.





QT Sydney  
Gowings & State  
Theatre  
**Sydney**  
Australia

Interior designer: Indyk Architects Pty Ltd  
Project director bedrooms: Shelley Indyk  
Period: 2012  
Client: Built NSW Pty Ltd









Sydney's hottest boutique hotel, the new QT Sydney on the corner of George and Market Streets has been created within the historic Gowings and State Theatre buildings. Interna, together with its sister in Shanghai, Interna China, was chosen to supply the custom made furniture for the guestrooms and selected public areas. All was produced at the highest quality. Indyk Architects were the architects for the interior planning layouts and realization of 200 guestrooms and their hallways. The spaces are designed for an artistic, quirky elite that love the 'art' of hotel staying, the excitement of a new experience, value high level design and desire comfort and surprise. Indyk Architects worked with the remnant historical details to create a new modern language of design with bespoke detailing at every turn. Rooms planned within the old buildings have a diversity and uniqueness. There are four colour palettes over the two buildings. Accompanying the colour palettes are a diversity of loose furniture choices, fabric options, a diverse and quirky range of lighting including pendants, standing and bedside lights, appropriate curtains and a variation in timber choices for the joinery. All built in and loose furniture was custom designed and produced. With further projects just completed in Perth and Melbourne Interna has had a strong start in Australia. Our work has received considerable attention from architects, designers and developers. With our company in Shanghai, we supply tailor-made products and installation services for the mid to high-end hospitality, residential and contract markets in the entire Asia Pacific Region. Interna's clients can choose between Made in Italy or Made in China with the Made in Italy Quality, know-how and supervision from our Italian technicians.

*"Interna produced fabulous results with the quality of all loose furniture. Their service was highly professional. It was a pleasure working with them."*

Shelley Indyk











The Private Jet  
Lounge Schiphol  
Int. Airport  
**Amsterdam**  
The Netherlands

Interior designer: FG stijl  
Period: 2012  
Client: Summum, The Private Jet Lounge





Summum is the Dutch word meaning “summit”, the perfect name for The Netherlands’ most exclusive private jet lounge located at the new private jet terminal of Schiphol. Designed by the Dutch interior architects studio FG stijl, the lounge combines style with practical functionality at the highest level of luxury and is divided into meeting rooms and lounge areas, distinctive by their size and functionality.

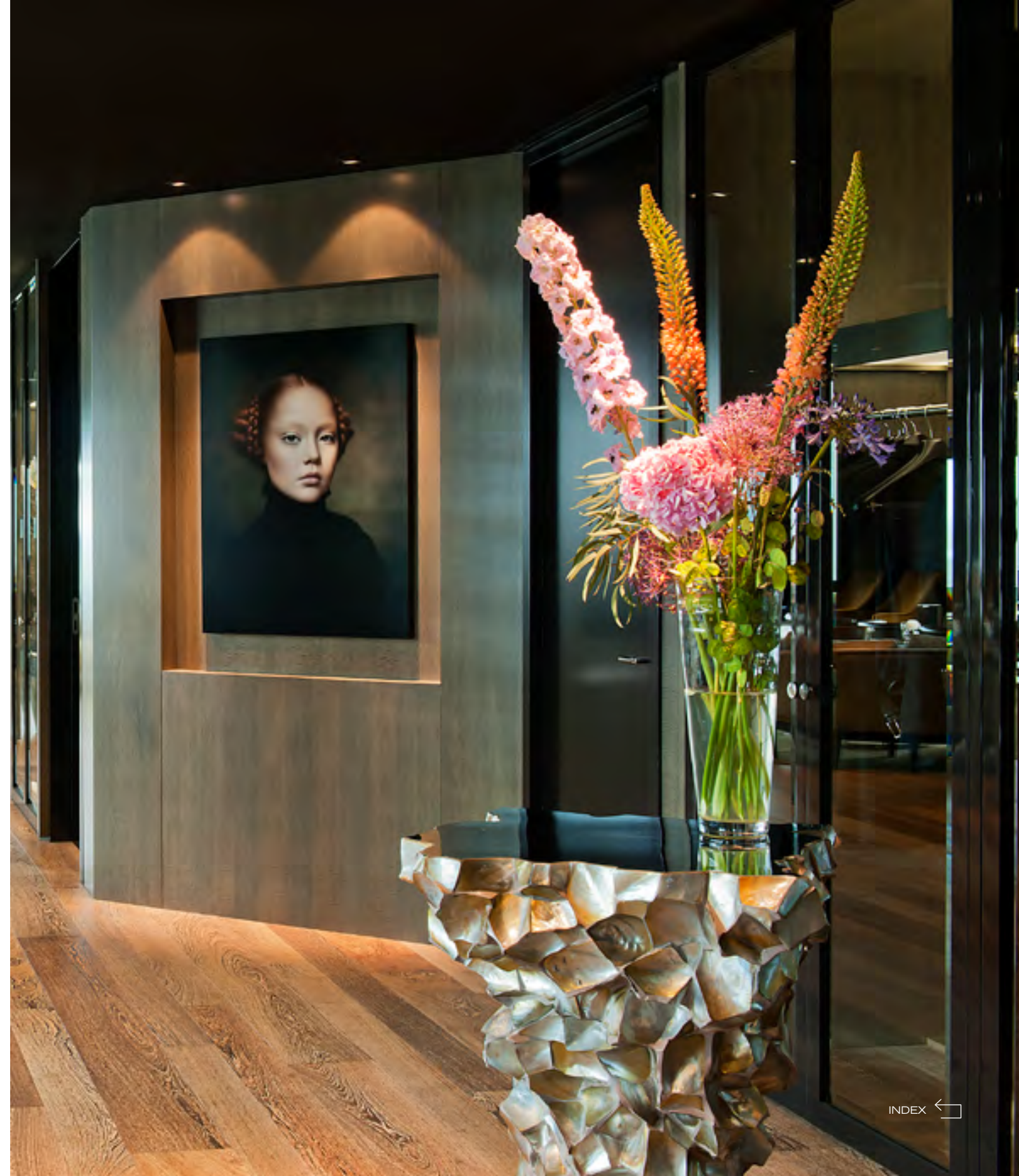
For this project Interna supplied the most part of the freestanding furniture, with a predominance of items belonging to their own collection “AngloDutch” designed in 2008 by FG stijl studio /Amsterdam.

Underlying the whole project, the leitmotiv of a sophisticated, precious elegance that, while hinting at times gone by, fully meets the requirements of today’s international lifestyle.

The summum lounge area: the large three to four seats Victoria sofa is complemented by smaller two seat Maxima sofas and Mary chairs. The Diana small hand bag ottoman is there to hold precious hand bags that can not be simply placed on the floor.

The large meeting room offers, around a mother of pearl table, seating for up to 26 people on Wilhelmina chairs from the Interna collection AngloDutch, upholstered in a warm, exclusive yellow fabric.

The small meeting room too, seating up to 10, features furniture from the AngloDutch collection.









Louis Vuitton  
Milan  
Montenapoleone

Italy

Interior designer: Peter Marino  
Period: 2011-2012  
Client: LVMH Italia SpA







The concept for the Louis Vuitton boutiques designed by Peter Marino envisions the space as a museum display so that each single item becomes an undisputed protagonist, acquiring the status of a piece of art that entrances the visitor-buyer by involving him in a powerful sensorial experience.





















Characteristic of this sophisticated concept, with a rather intricate implementation process, is the use of anigrè essences in various finishes, enhanced by the accurate use of light and the combination with other precious finishes for fabrics, leathers and metals.  
For the maison Vuitton Interna, as of today, has implemented more than 20 boutiques of large dimensions in different parts of the world, the most important of them located in Paris, Rome, Florence, Milan, Abu Dhabi, London, Dubai, Budapest, Wien, Hamburg, Saint Tropez and Yekaterinburg.









# Costa Fascinosa Cruise ship

Interior designer: Joseph Farcus Architect P.A.  
Period: 2011  
Client: Fincantieri





Eclectic materials and finishes in compliance with rigid rules for the Costa Fascinosa, the fifth cruise ship delivered by Interna to Fincantieri, twin sister of the Costa Favolosa.

As for the sister ship, the fitting was carried out in four main areas: aft lounge, dance lounge, piano bar and aft atrium, all signed turn key, including executive planning, supply, installation and final testing of floors, walls, ceilings, millwork and loose furniture, lamps, curtains, artwork and accessories.





The interior designer, the Miami based architect Joseph Farcus, envisaged different styles for the furniture produced with various materials and finishes: marble and granite mosaics, inlays made of different wood essences, matches of different metals, many different colour schemes and decorations for fabrics and leathers, all enveloped by the computer-controlled led games.











# Armani Hotel Milano Milan

Italy

Interior designer: Giorgio Armani  
Period: 2011  
Client: Emaar Properties









In December 2011 Interna successfully concluded the fitting out of the Armani Hotel in Milan, the second project of the Armani Hotels, Armani Resorts and Armani Residences hotel chain. This project was implemented in the immediate wake of the opening of the Armani Hotel in Dubai, a project that was also awarded to Interna in 2009.









The supply included case goods, sittings, beds and curtains, all unique items designed by Giorgio Armani for the 81 rooms, the 14 suites, the public areas and the conference rooms. The Armani Hotel Milano is the quintessence of the fashion and design city, where luxury never turns flaunt but means sober and refined elegance, a charming place infusing pace and serenity.















# Grand Hotel Bordeaux & SPA Bordeaux

France

Interior designer: Decoration Jacques Garcia  
Period: 2011  
Client: Snc Le Havre



Les Bains de Cleopatre: this is the name of the SPA and Wellness Centre at the historic Grand Hotel Bordeaux & SPA, that have been wholly furnished by Interna following the design of the French interior decorator Jacques Garcia.

In detail, Interna implemented the turn-key furnishing of a huge area (fifth and sixth floor plus the terrace) with a reception, a 120 sq.m. pool, a SPA area with sauna, massage rooms and a number of relaxation areas, a two level coiffeur salon, a terrace with bar, lounge club and whirlpool bath.





The Grand Hotel Bordeaux, itself performed by Interna, is the epitome of the splendour and charm of Bordeaux. Central, proudly discreet, but an exhibitionist at heart, display window of good taste, gastronomy, tradition, style, ambition and magnificence, the historic hotel is the embodiment of the Aquitaine luxury. The long lasting cooperation between Interna and Garcia has reached in this prominent and recently renovated building its highest design and quality levels.

























A wide-angle photograph of the interior lounge of the Costa Favolosa cruise ship. The space is circular and features a central bar with a curved front. The bar is decorated with a repeating pattern of square panels, each containing a circular inset with a blue, starry pattern. The bar is surrounded by high-top stools with gold-colored seats and chrome stems. The ceiling is ornate, with large, circular, recessed lighting fixtures that glow with a blue light. The floor is made of dark, polished tiles that reflect the lights. In the background, there are more tables and chairs, and a large window or glass partition. The overall atmosphere is luxurious and modern.

# Costa Favolosa Cruise ship

Interior designer: Joseph Farcus Architect P.A.  
Period: 2011  
Client: Fincantieri





Eclectic materials and finishes in compliance with rigid ruling for the Costa Favolosa, the fourth cruise ship delivered by Interna for Fincantieri. The fitting was carried out in the main areas of aft lounge, dance lounge, piano bar and aft atrium, all signed turn key, including executive planning, supply, installation and final testing of floors, walls, ceilings, millwork and loss furniture, lamps, curtains, artwork and accessories.





The interior designer, the Miami based architect Joseph Farcus, envisaged different styles for the furniture produced with various materials and finishes: marble and granite mosaics, inlays made of different wood essences, matches of different metals, many different colour schemes and decorations for fabrics and leathers, all enveloped by the computer-controlled led light games.







# Shangri-la Paris

France

Interior designer: Pierre Yves Rochon  
Period: 2011  
Client: Shangri-la Hotels (Paris) SARL





The prominent Asiatic hotel chain Shangri-la Hotels arrives in Europe with the opening in the Ville Lumière of the hotel Shangri-la in avenue De Jena, in the elegant 16° arrondissement, a few steps away from the Trocadero and choose Interna as partner for the creation of the furnishings.





The luxurious hotel, located in the historical building that in 1896 became the residence of the Prince Roland Bonaparte, nephew of Napoleon Bonaparte, has 78 luxurious rooms, 49 standards and 29 suites, all furnished by Interna with unique pieces in Louis XVI style, created with a meticulous work of the team Interna on design by the Parisian studio Pierre Yves Rochon.





















# Mandarin Oriental Hotel Paris

France

Interior designer: SM Design Paris  
Period: 2011  
Client: Laine Delau (Vinci Group)





The prestigious hotel located in Rue Saint Honorè, in the historic downtown of Paris, has 99 standards rooms, 41 suites, two of which presidential ones and six duplex. Interna supplied the millwork implementing a highly complex job in terms of manufacturing and planning, due to the fact that the rooms have different sizes and different subdivision of spaces; therefore all the items produced and installed by Interna are unique items.













The furnishings have been designed by the SM Design studio, Paris; the customer is the French building company Laine Delau, part of the Vinci group, one of the most renowned building companies worldwide.



















# Hyatt Regency Düsseldorf

Germany

Interior designer: FG stijl

Period: 2010-2011

Client: Projektgesellschaft Hafenspitze



Interna's long lasting cooperation with the Hyatt chain found its top-level expression in this modern and elegant business hotel located in the heart of the city. Interna supplied loose furniture –upholstery, tables and case goods- for public areas and more than 300 rooms and suites. All over the hotel found place many items selected from Interna's hospitality collections and customized in terms of sizes, materials and finishes.

















# Queen Elizabeth Cruise ship

Interior designer: Cunard Line  
Period: 2010  
Client: Fincantieri



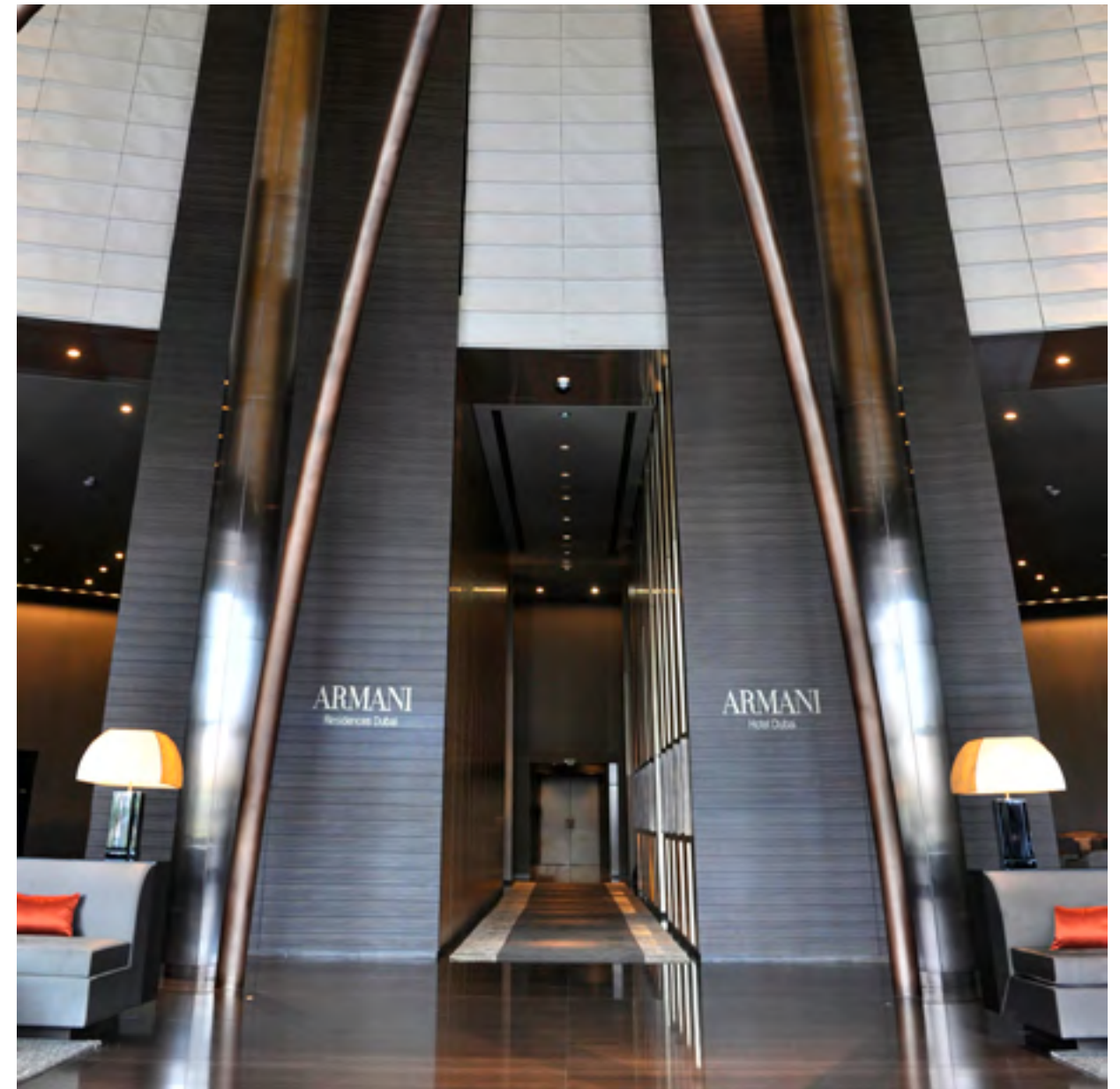
After having performed in 2008 for the Carnival Dream and in 2009 for the Azura, Interna intensified in 2010 its cooperation with the Fincantieri shipyards by supplying the furniture for the public areas of the Queen Elisabeth cruise ship, launched by Cunard. Interna supplied millwork and loose furnishings from floor to ceiling for the Queen's & Princess Grill, the Queen's Grill Lounge, the Courtyard Grill Terrace and the Yacht Club.



# Armani Hotel Armani Residences Dubai

UAE

Interior designer: Giorgio Armani  
Period: 2010  
Client: Emaar Properties



Interna supplied the loose furnishings of the Armani Hotel Dubai and Armani Residences Dubai. The exclusive hotel and residences was the first to open as part of the collection of Armani Hotels, Armani Resorts and Armani Residences planned in key cities across the globe. The supply included case goods, chairs, armchairs and beds, around 6000 unique and exclusive items which Interna produced exclusively for this project. The hotel includes 160 rooms and suites whilst the Armani Residences offers 144 one and two bedroom luxury apartments, all personally designed by Giorgio Armani.



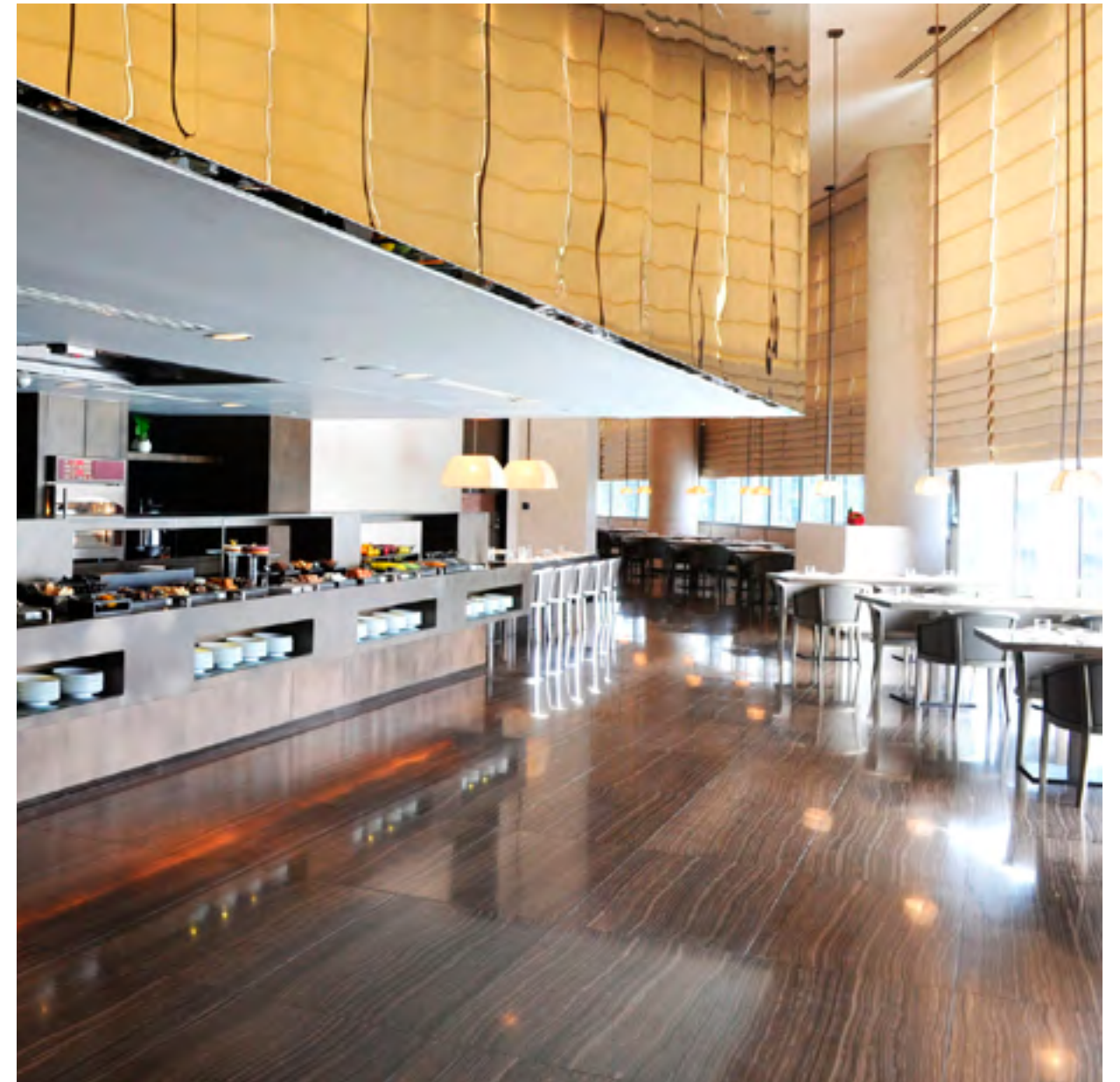






ARMA  
Hotel Dubai





The Armani Hotel Dubai and the Armani Residences Dubai are located in Emaar's iconic Burj Khalifa, the world's tallest building. Dubai-based Emaar Properties is one of the world's largest real estate developers with a footprint in over 36 markets.





The Burj Khalifa currently over 800 metres high, with over 160 storeys, is the tallest building in the world and lies at the centre of Downtown Burj Dubai, a 500-acre project that is anticipated to be the most luxurious square-kilometre shopping mall on earth once completed.

















# Athenee Palace Hilton Bucharest

Romania

Interior designer: Sigma Interiors  
Period: 2010  
Client: Ana Hotels S.A.





A classic and modern mix at the Athenee Palace Hilton Bucharest, refined hotel for which Interna supplied loose furniture, in part belonging to the Interna hospitality collections.



# Ducati Worldwide

Interior designer: Ducati  
Period: since 2010  
Client: Ducati Motor Holding spa





Interna is partner of the Ducati for the planning and implementation of the Ducati Caffè in Italy and worldwide. The first Ducati Caffè designed and performed by Interna is located within the Ducati headquarters at Borgo Panigale (Bologna) and has been named "Ducati Caffè Factory". The Ducati Caffè Bangkok and the Ducati Caffè Dubai have been already completed and the planning for the future openings is underway.



# Hotel La Mamounia Marrakech

Morocco

Interior designer: Decoration Jacques Garcia  
Period: 2009  
Client: Société hôtel La Mamounia



La Mamounia, historic Moroccan hotel, reopened its doors in 2009 and astonished the world with its splendour after a huge renovation. Moroccan splendour and quality made in Italy have been mixed in a wondrous match. Interna supplied furnishings and upholstery items for rooms and suites and furniture for some public areas.





Many have been the items selected from the monographic collection of Interna “Les Grands Classiques de Jacques Garcia” that joined the customized items again designed by the Parisian designer. Beige, vibrant red and green are the colours of the velvets and finishes that well integrate with the structure to create a refined Arab–Andalusian atmosphere.









# Prada Worldwide

Shop windows for boutiques worldwide

Interior designer: Prada SpA  
Period: 2009  
Client: Prada SpA

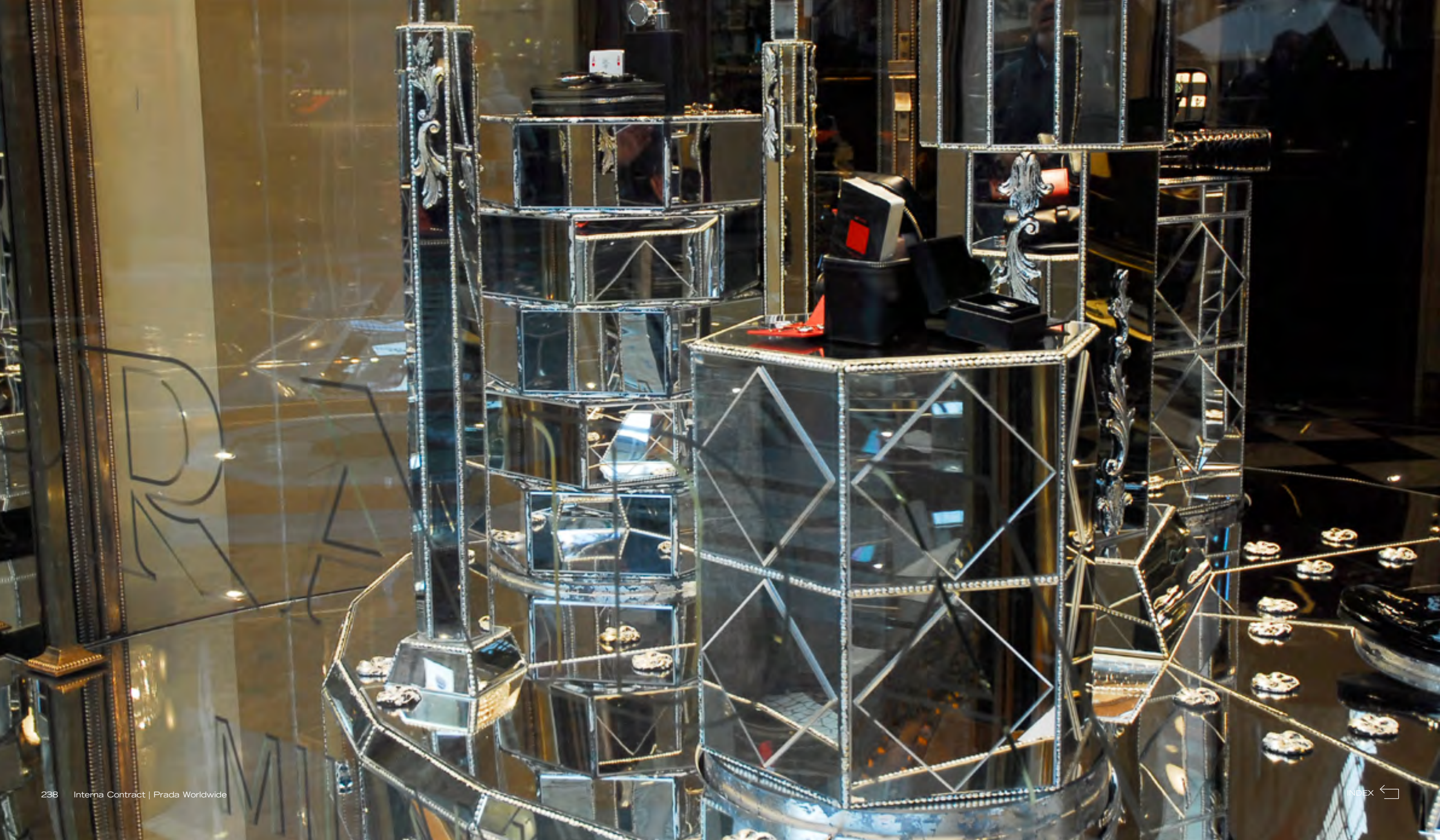














# Hotel Athénée Paris

France

Interior designer: Decoration Jacques Garcia  
Period: 2009  
Client: Sarl Gehor



The Hotel Athénée, one of the most elegant boutique hotels in Paris, furnished by Interna on a Jacques Garcia design. Seatings and tables for the whole hotel have been selected from the collection Les Grands Classiques de Jacques Garcia presented by Interna in 2005, but made unique by the fabrics and wooden finishes selected.

















Radisson Blu  
Hotel  
**Zürich Airport**  
Switzerland

Interior designer: Kalfopoulos Architekten AG  
Period: 2009  
Client: Rezidor Hotels Switzerland AG





With its location near the Zürich Airport, the premier services and the design rooms, the Radisson Blu Hotel is the ideal place to relax during travels to the largest city in Switzerland. It is located directly across from the terminal, offering convenient, elite access for busy travelers.

The interior design combines ultra modern architecture with high tech state of the art comforts. Interna was commissioned to provide furnishings for the executive lounges and for the meeting rooms that highlight simple, refined and elegant lines. All the items are of exceptional quality and are enhanced by the use of warm, unusual and precious woods in alternation with cold complements in steel and glass.



# Carnival Dream Cruise ship

Interior designer: Joseph Farcus Architect P.A.  
Period: 2008 - 2009  
Client: Fincantieri







Interna entered the world of the naval fit out with the Carnival Dream commissioned by Fincantieri. It is, up today, the largest cruise ship built by the Fincantieri group in the shipyards of Monfalcone, Italy. Interna fitted out the millwork of three public areas, aft lounge, jazz club and piano bar, for a total surface of 1,050 square meters. It was a significant project, which allowed Interna to enter the world of the fit out of cruise ships. The three areas managed by Interna have mosaic and marble floors, upholstered walls enriched with Venetian masks and curvilinear ceilings illuminated by huge glass chandeliers. The electronically managed illumination has been specially designed in order to create suggestive light games, thus contributing to the creation of an eclectic oeuvre d'art that sensually involve passengers in a timeless dimension.



# Cartier Worldwide

Interior designer: Bruno Moinard  
Period: 2008-2015  
Client: SC Société Cartier – Paris



For the Cartier boutiques, Interna supplies all the upholstered items, upon design of the Parisian maestro Bruno Moinard. Sofas, armchairs, chaise lounge, lounge armchairs and chairs, with impeccable quality in materials and production, are sent to the Cartier boutiques worldwide and, up today, Interna implemented more than 350 Cartier boutiques.



# Danieli Venice

Italy

Interior designer: Decoration Jacques Garcia  
Period: 2008  
Client: Danieli Management srl



The Hotel-palazzo Danieli is the epitome of the splendour and charm of Venice. Only a few steps away from the S. Marco square, the Danieli is one of the most renowned examples of the refined hospitality in Europe and the favourite luxury hotel in Venice for many generations of guests.

For this project Interna supplied a range of sittings both for the public areas and for the rooms and suites; many have been designed specifically for this projects, whereas many others have been selected from the furniture collection that the Parisian designers Jacques Garcia created exclusively for Interna in 2005.







# Radisson Blu Hotel Dakar

Senegal

Interior designer: Antoni Associates  
Period: 2007-2008  
Client: Chain Hotel Company SA





The furnishing for the prestigious turn-key project Radisson Blu Hotel, Dakar included all fixed and loose furniture for the public areas, the over 180 rooms, and the “back of the house”, i.e. all the operational offices and meeting rooms, as well as all the necessary equipments for the hotel “life” (industrial kitchens, laundry, table wear, and so on). For this huge project Interna produced tailor-made pieces of furniture all following the exclusive design of the South African interior design studio Antoni Associates.









The Radisson Blu Hotel, Dakar is the fifth hotel executed by the Interna Group to be managed by the hotel chain Radisson Blu, after the ones already completed in London Stansted, London City, Niece and Hannover.











# interna

---

## CONNECT

### INTERNA HEADQUARTERS

9/A, via C. Galilei  
33010 Tavagnacco  
(Udine) Italy  
Phone: +39 0432 643 211  
Fax: +39 0432 574 131  
interna@interna.it  
www.interna.it

### INTERNA ASIA PACIFIC CO., LTD

盈特娜 (上海) 贸易有限公司  
425 Yanping Lu,  
Continuity Building, Unit 308  
Jing An District 200042  
Shanghai PR China  
中国上海市静安区延平路 425 号 308 室  
Phone 电话 +86 (0)21 62712977  
Fax 传真 +86 (0)21 62712917  
interna.asia@interna.it  
www.interna.asia

### INTERNA WORLDWIDE

Australia, Austria, Finland,  
France, Germany, India, Japan,  
Morocco, New Zealand,  
Russia, Singapour, Spain,  
The Netherlands, UAE, UK,  
USA, Vietnam

For Agencies details please  
contact Interna Headquarters  
Sales Department



INTERNA IS A CERTIFIED GROUP  
QUALITY: ISO 9001  
ENVIRONMENT: ISO 14.001  
ETHICS: SA 8000