



adele project





PER TUTTE LE RAGIONI DEL MONDO.



adele^{project}

DESIGN & FUNZIONE

▣ LINEA ▣ ISOLA ▣ PENISOLA ▣ GOLFO

UNA CUCINA DI DESIGN PIACEVOLE AL TATTO MA DI GRANDE RESISTENZA ALL'USO, CON VOLUMI IMPORTANTI CHE DANNO UN'AMPIA POSSIBILITÀ COMPOSITIVA. LA NATURALE BELLEZZA DEL LEGNO E LA RICCA OFFERTA DI COLORI LACCATI FANNO DI ADELE UNA CUCINA CHE SA DARE LA SUGGERIONE DELLA MATERIA PURA.

A DESIGN KITCHEN PLEASANT TO THE TOUCH YET HIGHLY DURABLE AND EQUIPPED WITH ROOMY ELEMENTS OFFERING A VARIETY OF COMPOSITION OPTIONS. THE NATURAL BEAUTY OF WOOD COUPLED WITH THE EXTENSIVE RANGE OF LACQUERED COLOURS TURN ADELE INTO A KITCHEN CAPABLE OF EVOKING THE CHARM OF PURE MATTER.





LA CUCINA CON PENISOLA CREA UN COLLEGAMENTO OTTIMALE FRA DISPENSA, PIANO DI LAVORO, AREA DI COTTURA, PIANO SNACK E LIVING.

THIS KITCHEN WITH PENISOLA CREATES AN EXCELLENT HUB OF STORAGE UNITS, WORKTOP, COOKING AREA, SNACK COUNTER AND LIVING AREA.





IL PIANO TAVOLO È IN ROVERE NATURALE, UN MATERIALE BELLO E PIACEVOLE AL TATTO CHE DIVENTA UN RICERCATO DETTAGLIO ALL'INTERNO DELLA CUCINA.

THE BEAUTIFUL NATURAL OAK TABLE TOP IS PLEASANT TO TOUCH AND IS THE STAND-OUT FEATURE OF THIS KITCHEN.

01

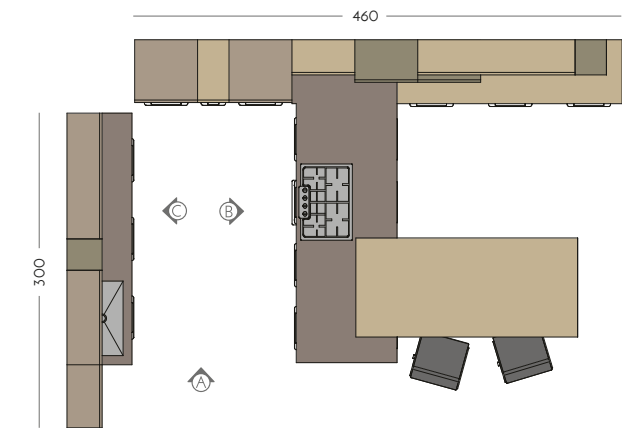
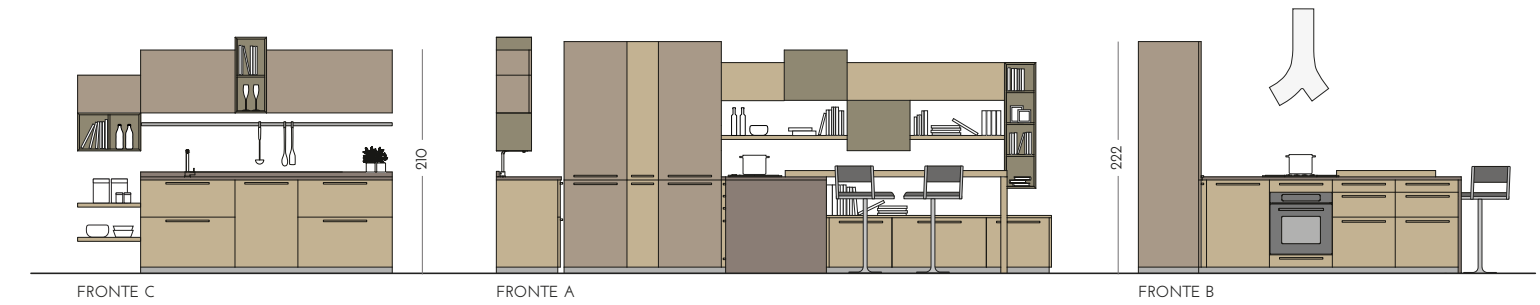
PENISOLA

COMPOSIZIONE A PENISOLA CON PIANO COTTURA, BASI, PENSILI E COLONNE, COMPLETATA DAL LIVING INTEGRATO CON VANI A GIORNO E MENSOLE.

PENINSULA LAYOUT WITH HOB, BASE, WALL AND COLUMN UNITS, COMPLETE WITH INTEGRATED LIVING AREA INCLUDING OPEN UNITS AND SHELIVING.



DIMENSIONI / DIMENSIONS

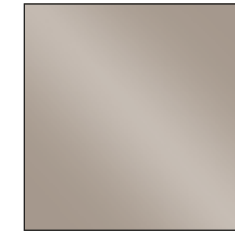


FINITURE / FINISHES

ANTA / DOOR



PLACCATA IN MASSELLO DI ROVERE NATURALE
LAMINATED NATURAL SOLID OAK



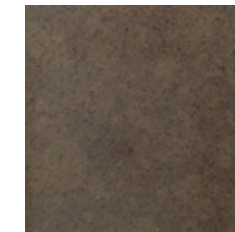
LACCATO VISONE LUCIDO
LACQUERED GLOSSY MINK

ELEMENTI A GIORNO / OPEN UNITS



LACCATO VERDE LICHENE OPACO
LACQUERED MATT LICHEN GREEN

TOP / WORKTOP



QUARZO LAB LUBE TABACCO H3 PROFILO "P"
LUBE LAB QUARTZ TOBACCO H3 "P" PROFILE



PENISOLA IMPIALLACCIATA ROVERE NATURALE
PENINSULA VENEERED NATURAL OAK

SGABELLO / STOOL

PITAGORA



STRUTTURA CROMATA, SEDUTA E SCHIENALE IN SIMILPELLE COLORE TITANIO PIENO FIORE / STRUCTURE WITH CHROME FINISH, SEAT AND BACK IN TITAN-COLOURED FULL-GRAIN LEATHERETTE

MANIGLIA / HANDLE

OPZ. 475M



FINITURA BROWN OPACO / MATT BROWN FINISH







UNA COMPOSIZIONE LIVING
PERFETTAMENTE INTEGRATA ALLA
CUCINA, GRAZIE ALLA GRANDE
COMPONIBILITÀ E ALL'ELEGANZA
DEL FRASSINO VISIONE CHE
COLLEGA I DUE AMBIENTI.

LIVING SPACE PERFECTLY INTEGRATED
WITH KITCHEN, THANKS TO
MODULARITY AND ELEGANT MINK ASH
LINKING THE TWO AREAS.

02

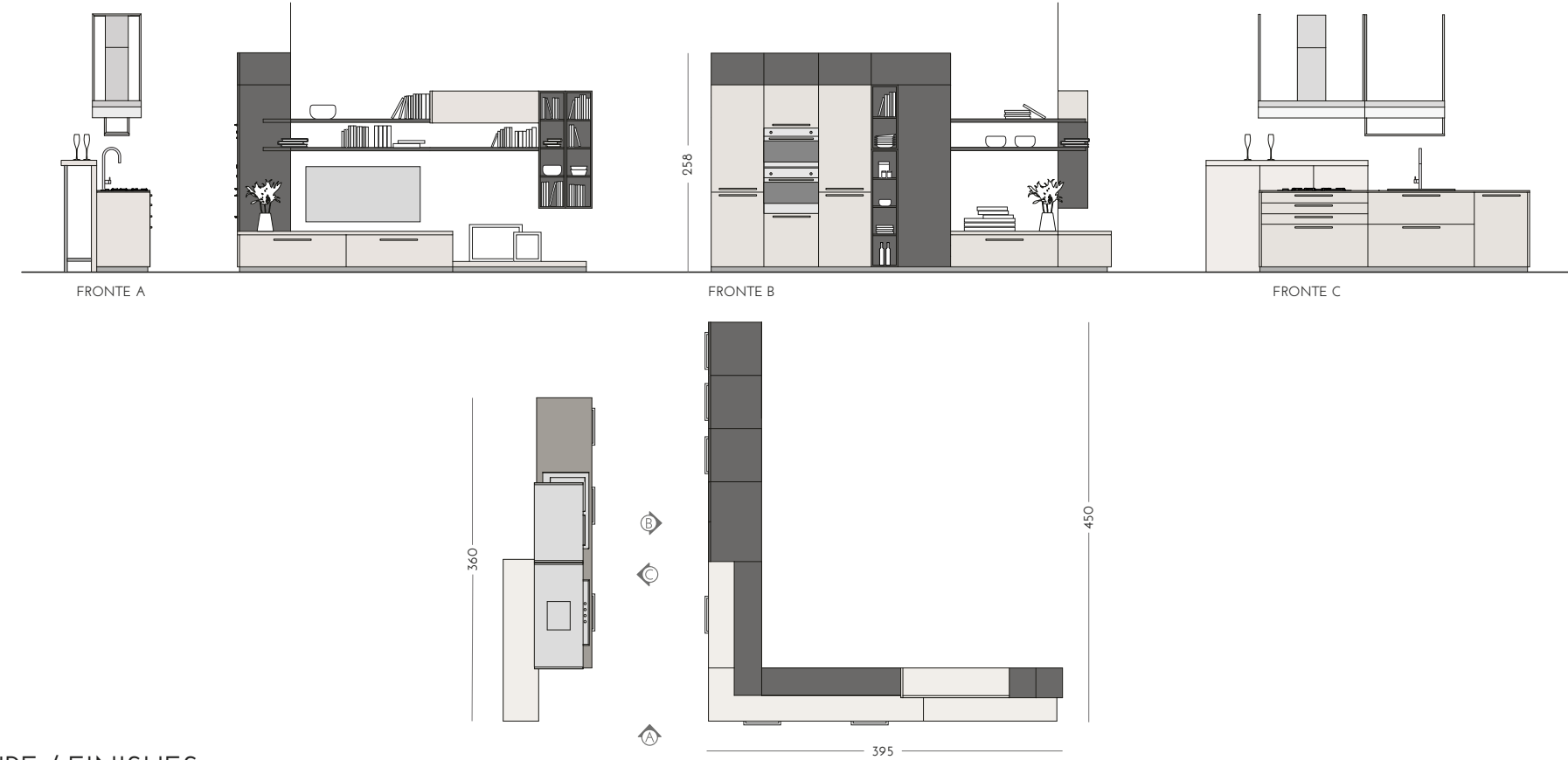
ISOLA

COMPOSIZIONE CON ISOLA ATTREZZATA E LATO SNACK COMPLETATA DA COLONNE CON ELETTRODOMESTICI, LIVING E LIBRERIA.

LAYOUT WITH ACCESSORISED ISLAND AND SNACK COUNTER, COMPLETE WITH COLUMN UNITS WITH APPLIANCES, LIVING AREA AND BOOKCASE.

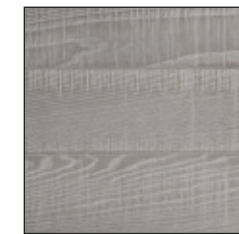


DIMENSIONI / DIMENSIONS



FINITURE / FINISHES

ANTA / DOOR



PLACCATA IN MASSELLO DI FRASSINO VISONE
LAMINATED MINK SOLID ASH



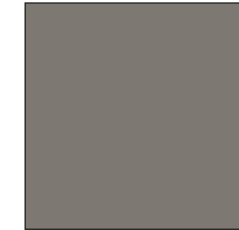
LACCATO LAVAGNA OPACO
LACQUERED MATT SLATE GREY

ELEMENTI A GIORNO / OPEN UNITS



LACCATO LAVAGNA OPACO
LACQUERED MATT SLATE GREY

TOP / WORKTOP



LAMINATO FENIX COLORE GRIGIO LONDRA
LAMINATED FENIX LONDON GREY

SGABELLO / STOOL

PITAGORA



STRUTTURA CROMATA, SEDUTA E SCHIENALE IN SIMILPELLE COLORE TITANIO PIENO FIORE
/ STRUCTURE WITH CHROME FINISH, SEAT AND BACK IN TITAN-COLOURED FULL-GRAIN LEATHERETTE

MANIGLIA / HANDLE

OPZ. 554



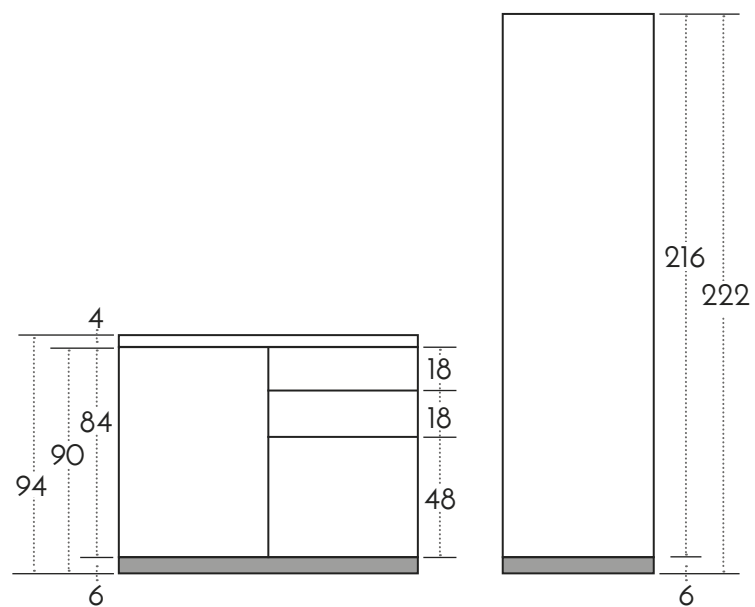
FINITURA NICHEL SATINATO / SATIN NICKEL FINISH



ZOCCOLO H6 CENTIMETRI PIÙ VOLUME DI CONTENIMENTO

CON LO ZOCCOLO AD ALTEZZA RIDOTTA A 6 CM, SI POSSONO GUADAGNARE CENTIMETRI PREZIOSI DI CONTENIMENTO, DANDO ALLA CUCINA L'ASPETTO ELEGANTE DI UN LIVING.

VALUABLE SPACE HAS BEEN SAVED BY LOWERING THE PLINTH TO 6 CM, AND SO THE KITCHEN BEGINS TO TAKE ON THE STYLISH APPEARANCE OF A LIVING ROOM.





IL LAVELLO SI INTEGRA
PERFETTAMENTE CON IL TOP
IN CORIAN E PERMETTE UN
UTILIZZO MOLTO PRATICO
DELLA ZONA LAVAGGIO.

THE SINK BLENDS IN PERFECTLY
WITH THE CORIAN WORKTOP
AND ENSURES PLENTY OF
PRACTICALITY WHEN USING THE
WASHING ZONE.



03

GOLFO

COMPOSIZIONE A GOLFO CON PENSILI SOSPESI ATTREZZATI E BASE CON PIANO COTTURA E LAVELLO, COMPLETATA DA COLONNE ATTREZZATE CON TERMINALI A GIORNO.

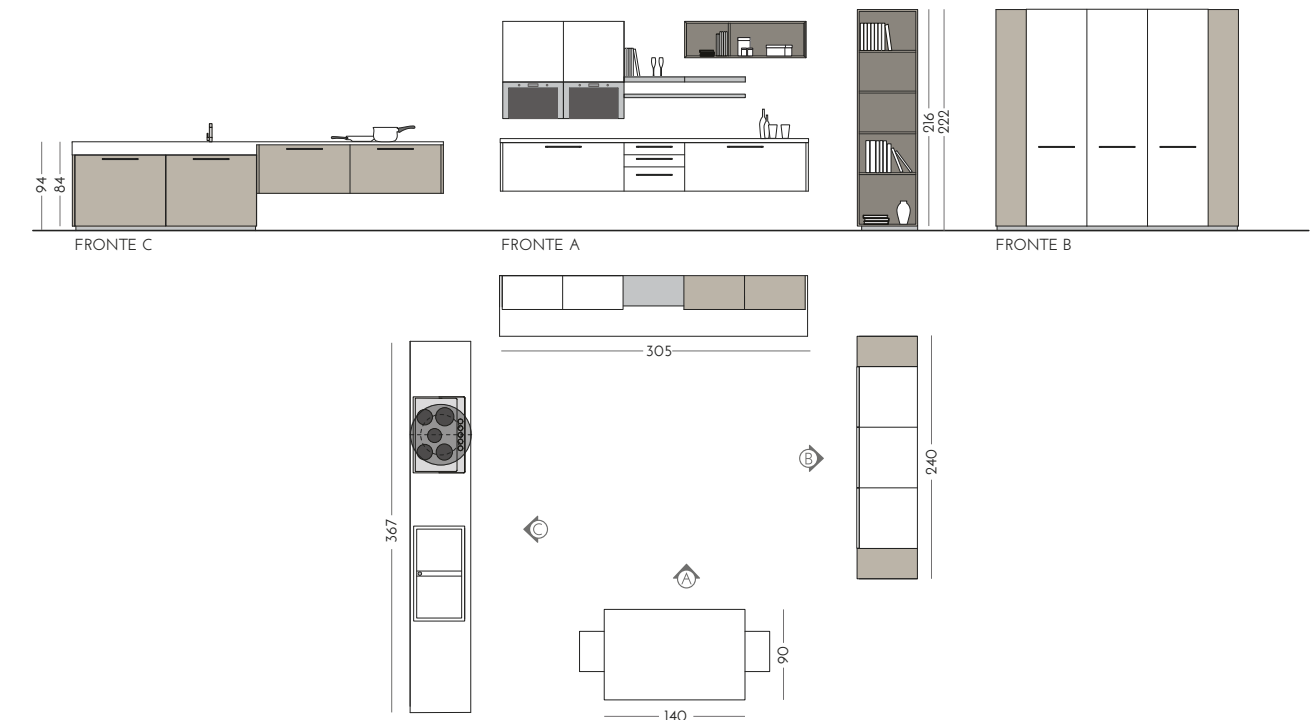
BAY LAYOUT WITH ACCESSORISED SUSPENDED WALL UNITS AND BASE UNITS WITH HOB AND SINK, COMPLETE WITH ACCESSORISED COLUMN SECTIONS WITH OPEN END UNITS.

VARIANTE CON
SEDIA DEMI E TAVOLO DAISI IN FRASSINO BIANCO

VARIANT WITH
DEMI CHAIR AND DAISI TABLE IN WHITE ASH



DIMENSIONI / DIMENSIONS



FINITURE / FINISHES

ANTA / DOOR

LACCATO
VISONE LUCIDO
LACQUERED
GLOSSY MINK

LACCATO
BIANCO ASSOLUTO
LUCIDO
LACQUERED
GLOSSY
ABSOLUTE WHITE

VETRO
BIANCO NEVE
LUCIDO
GLASS
GLOSSY
SNOW WHITE

ELEMENTI A GIORNO / OPEN UNITS

LACCATO
VISONE OPACO
LACQUERED
MATT MINK

TOP / WORKTOP

CORIAN GLACIER
WHITE 301
CORIAN GLACIER
WHITE 301

MANIGLIA / HANDLE

OPZ. 551 FINITURA CROMO / CHROME FINISH



SEDIA / CHAIR

AMBRA



STRUTTURA IN METALLO CROMATO,
SCOCCA LACCATA BIANCO ASSOLUTO
/ CHROMED METAL STRUCTURE,
ABSOLUTE WHITE LACQUERED BODY

TAVOLO / TABLE

SATURNO



BASAMENTO BIANCO OPACO E TOP TESTURIZZATO SOFT
COLORE BIANCO ASSOLUTO
/ MATT WHITE BASE AND SOFT-TEXTURED
ABSOLUTE WHITE-COLOURED TOP



LA PENISOLA CON IL PIANO SNACK
SEPARA LA ZONA COTTURA E
LAVAGGIO DALLA ZONA PRANZO
E CREA UNA PRATICISSIMA ZONA
CONTENIMENTO.

THE PENINSULA WITH THE SNACK
COUNTER SEPARATES THE COOKING
AND WASHING ZONES FROM THE
MEAL AREA, WHILE CREATING A HIGHLY
PRACTICAL STORAGE ZONE.





I MATERIALI SCELTI PER ADELE SONO PREGIATI
COME IL FRASSINO BIANCO E CAFFÈ DELLE
ANTE ED ANCHE ECOSOSTENIBILI COME IL GRES
LAMINAM PER IL TOP. IL PIENO RISPETTO DELLA
NATURA ANCHE PER LA TUA CUCINA.

THE HIGHLY-REFINED MATERIALS CHOSEN FOR ADELE
INCLUDE THE COFFEE AND WHITE ASH FINISH OF THE
DOORS, ALONGSIDE ECO-COMPATIBLE MATERIALS SUCH
AS LAMINAM STONEWARE FOR THE WORKTOP. AN
AWARENESS FOR THE ENVIRONMENT THAT IS REFLECTED
IN YOUR KITCHEN AS WELL.





L'ATMOSFERA SOFT E DELICATA DEL BIANCO È SCALDATA DALLA CALDA TONALITÀ DEL TOP MATERICO. MATERIALI E COLORI ETEROGENEI IN PERFETTO EQUILIBRIO.

THE SOFT AND DELICATE ATMOSPHERE OF WHITE IS WARMED UP BY THE WARM SHADE OF THE TEXTURED WORKTOP. DIFFERING MATERIALS AND COLOURS MERGE TO FORM A HARMONIOUS COMBINATION.



04

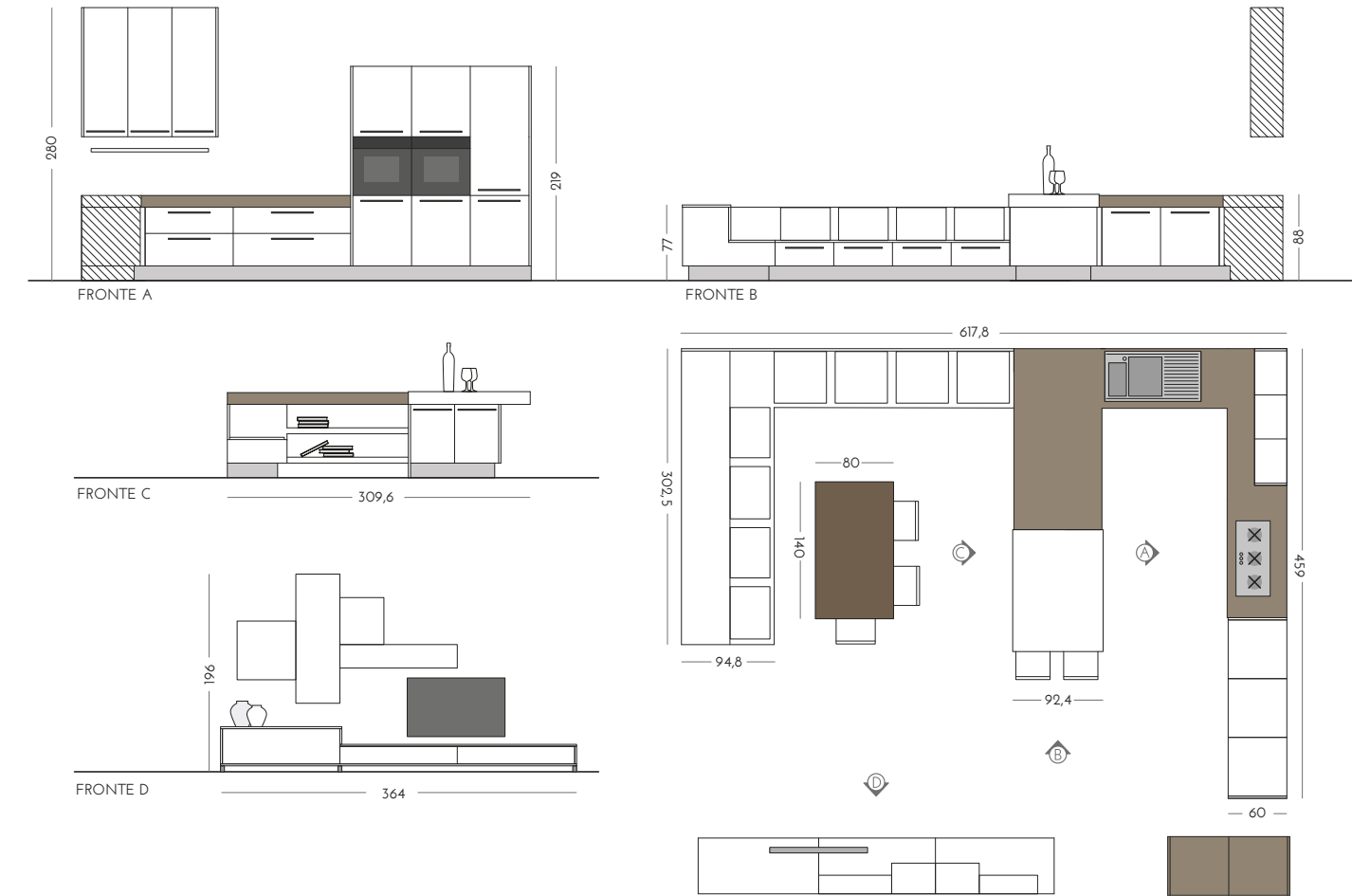
PENISOLA

COMPOSIZIONE A PENISOLA CON PIANO SNACK,
COLONNE ATTREZZATE, ZONA COTTURA E LAVAGGIO,
COMPLETATA DA ZONA PRANZO CON PRATICO CONTENIMENTO.

PENINSULA LAYOUT WITH SNACK COUNTER, ACCESSORISED
COLUMN UNITS, COOKING AND WASHING AREA, COMPLETE
WITH DINING AREA WITH PRACTICAL STORAGE.

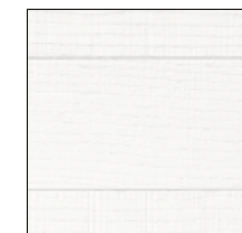


DIMENSIONI / DIMENSIONS



FINITURE / FINISHES

ANTA / DOOR

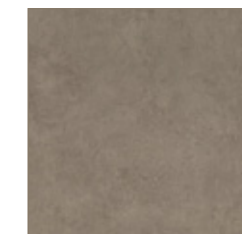


PLACCATA IN
MASSELLO DI
FRASSINO BIANCO
LAMINATED
WHITE SOLID ASH



PLACCATA IN
MASSELLO DI
FRASSINO CAFFÈ
LAMINATED
COFFEE SOLID ASH

TOP / WORKTOP



LAMINAM
FOCUS TERRA
LAMINAM
FOCUS TERRA

SEDIA / CHAIR

DIAN



STRUTTURA IN METALLO, RIVESTITA
IN FIBRE DI CUIO BIANCO RIGENERATO
/ METAL STRUCTURE, PADDED WITH
REGENERATED WHITE LEATHER FIBERS

TAVOLO / TABLE

ORIONE



IMPIALLACCIATO FRASSINO CAFFÈ
/ VENEERED COFFEE ASH

SGABELLO / STOOL

DILI



STRUTTURA CROMATA, SEDUTA IN FIBRE DI
CUIO BIANCO RIGENERATO
/ CHROMED STRUCTURE, SEAT IN
REGENERATED WHITE LEATHER FIBERS

MANIGLIA / HANDLE

OPZ. 477



FINITURA CROMO / CHROME FINISH





TUTTO IL CALORE E LA MATERICITÀ DEL LEGNO NELLE ANTE CHE IMPREZIOSICONO L'ISOLA. I VANI A GIORNO ALLA TESTA DELL'ISOLA HANNO SPAZI ASIMMETRICI PER RIPORRE OGGETTI DI DIVERSA ALTEZZA.

ALL THE WARMTH AND MATERIAL EFFECT OF WOOD CHARACTERISE THE DOORS ENRICHING THE ISLAND. THE OPEN ELEMENTS AT THE HEAD OF THE ISLAND INCLUDE ASYMMETRIC SPACES FOR PLACING OBJECTS AT DIFFERENT HEIGHTS.

VARIANTE CON L'ANTA DEL LIVING
DECORATA CON UNA PREZIOSA
PITTURA ASTRATTA. OGNI ANTA È DA
CONSIDERARSI PEZZO UNICO, FIRMATO
ED AUTENTICATO DALL'AUTORE.

VERSION WITH THE DOOR OF THE LIVING
DECORATED WITH A VALUABLE ABSTRACT
PAINT. EACH DOOR HAS TO BE CONSIDERED
UNIQUE, SIGNED AND CERTIFIED BY THE
AUTHOR.



05

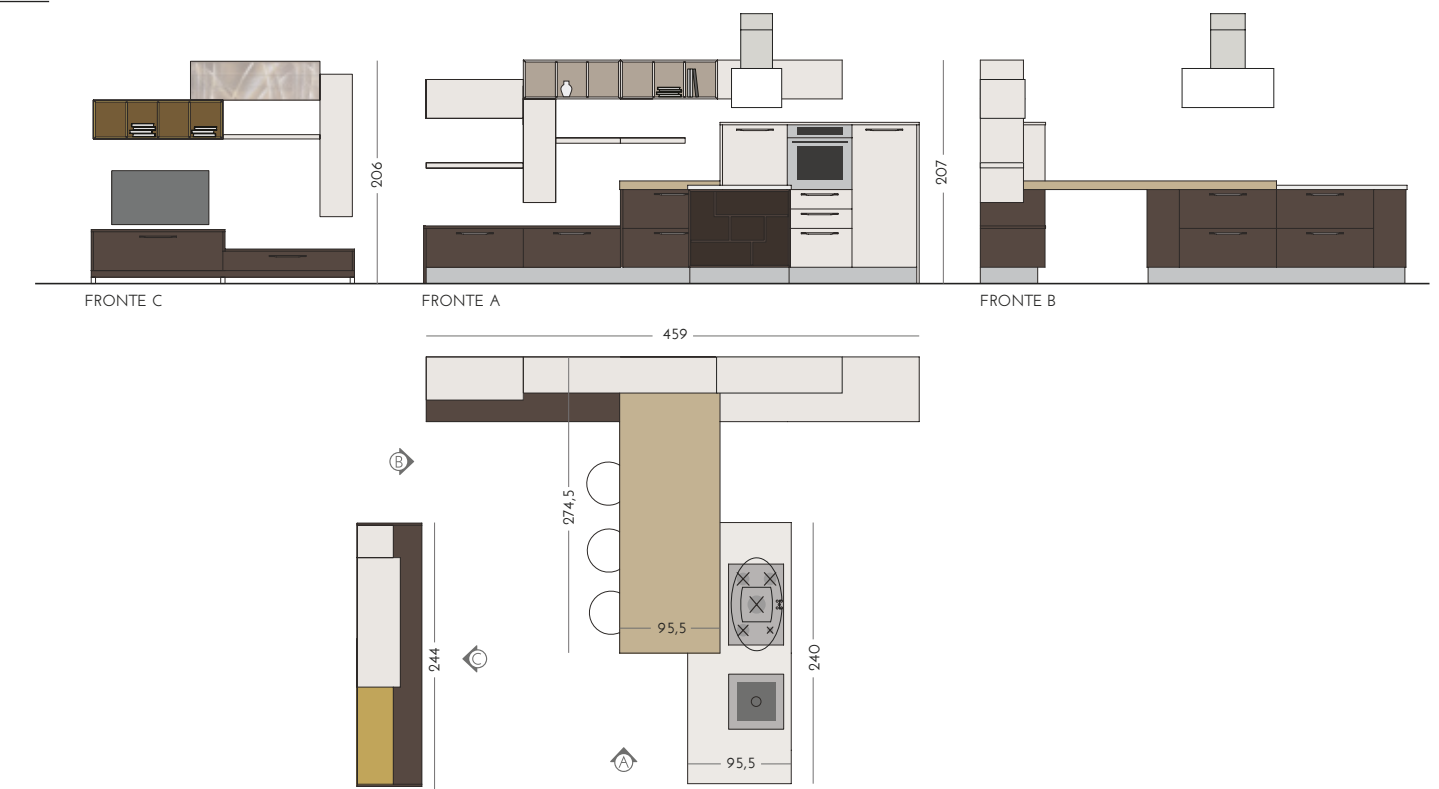
ISOLA

COMPOSIZIONE CON ISOLA ATTREZZATA CON LATO SNACK COMPLETATA DA COLONNE CON ELETTRODOMESTICI, PENSILI, VANI A GIORNO E LIVING.

LAYOUT WITH ACCESSORISED ISLAND WITH SNACK COUNTER, COMPLETE WITH COLUMNS WITH APPLIANCES, WALL UNITS, OPEN UNITS AND LIVING AREA.



DIMENSIONI / DIMENSIONS



FINITURE / FINISHES

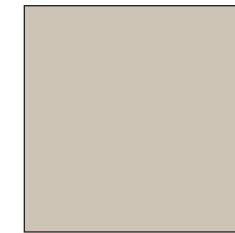
ANTA / DOOR



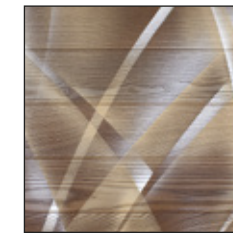
PLACCATA IN MASSELLO DI FRASSINO CORDA
LAMINATED CORD SOLID ASH



PLACCATA IN MASSELLO DI FRASSINO CAFFÈ
LAMINATED COFFE SOLID ASH

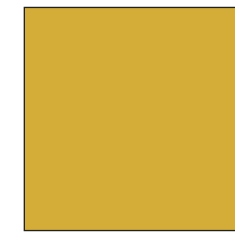


LACCATO TORTORA OPACO
LACQUERED MATT DOVE GREY



PLACCATA IN MASSELLO DI FRASSINO CAFFÈ CON PITTURA
LAMINATED COFFE SOLID ASH WITH PAINTING

ELEMENTI A GIORNO / OPEN UNITS



LACCATO GIALLO AMBRA OPACO
LACQUERED MATT AMBER YELLOW

TOP / WORKTOP



LAMINATO ESTEREL
FINITURA WRAKY
LAMINATED ESTEREL
WRAKY FINISH



LAMINATO PIETRA DI NANTO
FINITURA WRAKY
LAMINATED NANTO STONE WITH
WRAKY FINISH

MANIGLIA / HANDLE

OPZ. 466



FINITURA CROMO / CHROME FINISH



NELLE COLONNE SONO INSERITI DEGLI ELEMENTI A GIORNO LACCATI, CHE SPEZZANO LA PERFETTA SIMMETRIA E MONOCROMIA DELLE ANTE.

THE COLUMNS CONTAIN LACQUERED OPEN ELEMENTS THAT INTERRUPT THE PERFECT SYMMETRY AND UNIFORM COLOUR OF THE DOORS.





LA PENISOLA NON È PIÙ UN ACCESSORIO DOVE CONSUMARE UN PASTO VELOCE, MA UN VERO E PROPRIO ELEMENTO DI DESIGN. FUNZIONALITÀ ED ESTETICA IN UN SOLO ELEMENTO COME PER LE MENSOLINE SAGOMATE LATERALI.

THE PENINSULA IS NO LONGER A MERE ACCESSORY FOR CONSUMING FAST MEALS, BUT A GENUINE DESIGN ELEMENT. FUNCTIONALITY AND AESTHETICS PACKED INTO A SINGLE ELEMENT, LIKE THE SHAPED SIDE SHELVES.



06

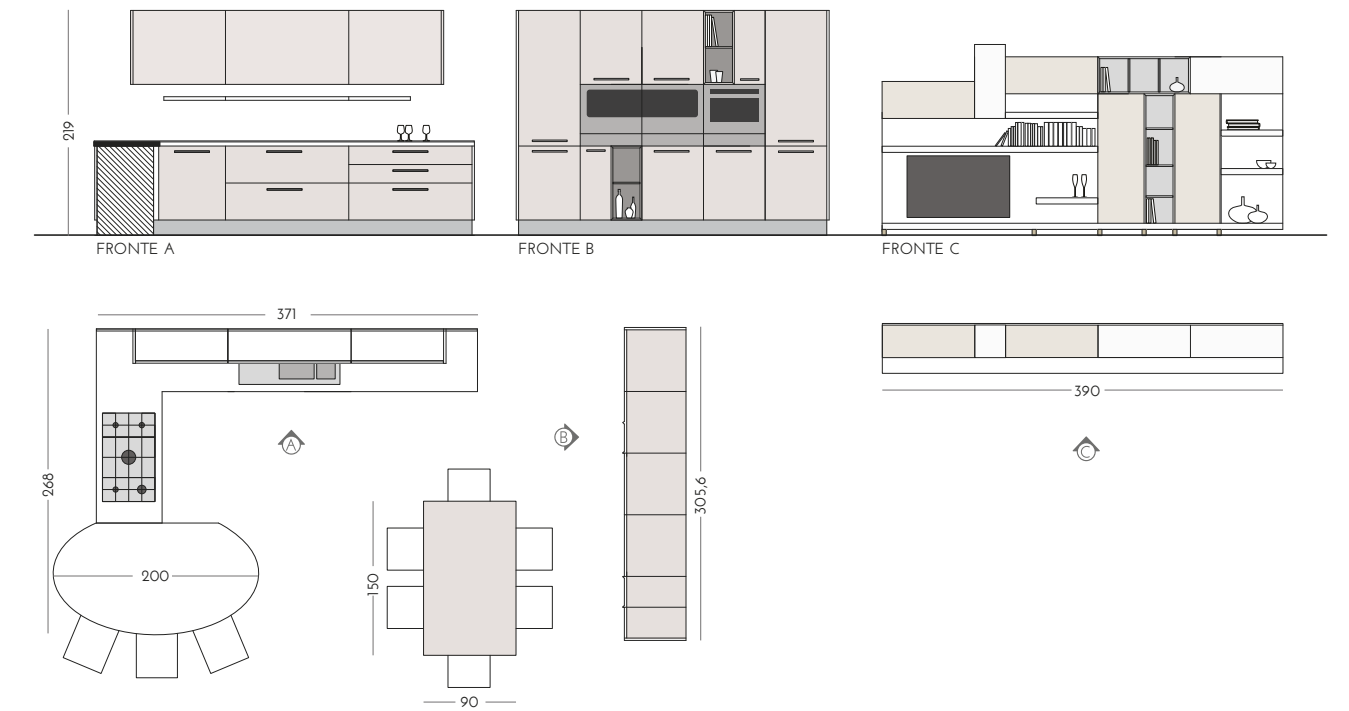
PENISOLA

COMPOSIZIONE CON MOBILE PENISOLA ELLITTICO CON 4 MENSOLE SAGOMATE LATERALI, COMPLETATA DA COLONNE ATTREZZATE E LIVING.

LAYOUT WITH ELLIPTICAL PENINSULA WITH 4 SHAPED SIDE SHELVES, COMPLEMENTED BY ACCESSORISED COLUMNS AND LIVING AREA.



DIMENSIONI / DIMENSIONS

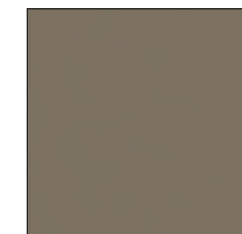


FINITURE / FINISHES

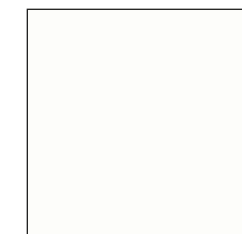
ANTA / DOOR



PLACCATA IN
MASSELLO DI
FRASSINO TERRA
LAMINATED
EARTH BROWN
SOLID ASH

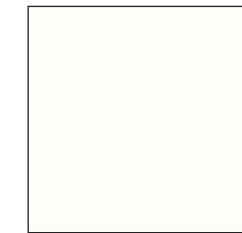


LACCATO
CAFFÈ OPACO
LACQUERED
MATT COFFEE



LACCATO
BIANCO ASSOLUTO
OPACO
LACQUERED
MATT
ABSOLUTE WHITE

TOP / WORKTOP



UNICOLOR
BIANCO ASSOLUTO
UNICOLOR
ABSOLUTE WHITE

SEDIA / CHAIR

EIDER



MASSELLO LACCATO BIANCO ASSOLUTO
/ LAMINATED WHITE SOLID ASH

TAVOLO / TABLE

DAISY



IMPIALLACCIATO FRASSINO TERRA
/ VENEERED EARTH BROWN ASH

SGABELLO / STOOL

DILI



STRUTTURA CROMATA, SEDUTA IN FIBRE DI
CUOIO BIANCO RIGENERATO
/ CHROMED STRUCTURE, SEAT
IN REGENERATED WHITE LEATHER FIBERS

MANIGLIA / HANDLE

OPZ. 463



FINITURA CROMO / CHROME FINISH





VARIANTE DELLA COMPOSIZIONE CON L'ANTA DEL LIVING DECORATA IN UNA TONALITÀ CANGIANTE E ARGENTATA. I COLORI SONO TONO SU TONO E STESI CON UNA TECNICA CHE DONA L'EFFETTO DELLA TRASPARENZA GLOBALE.

VARIATION OF COMPOSITION WITH THE DOOR OF THE LIVING DECORATED IN A SHIMMERING AND SILVERY SHADE. THE COLORS ARE TONE SUR TONE AND LAID OUT WITH A TECHNIQUE THAT GIVES THE EFFECT OF GLOBAL TRANSPARENCY.



LE BOTTIGLIE DI VINO DIVENTANO IL DECORO PERFETTO DI UNA CUCINA DI CLASSE, GRAZIE AL PORTABOTTIGLIE A GIORNO E ALLA CANTINETTA INSERITA NELLA COLONNA.

THE WINE BOTTLES TURN INTO THE PERFECT DECORATION FOR A CLASSY KITCHEN, THANKS TO THE OPEN BOTTLE HOLDER AND BOTTLE RACK INSERTED IN THE COLUMN.



07

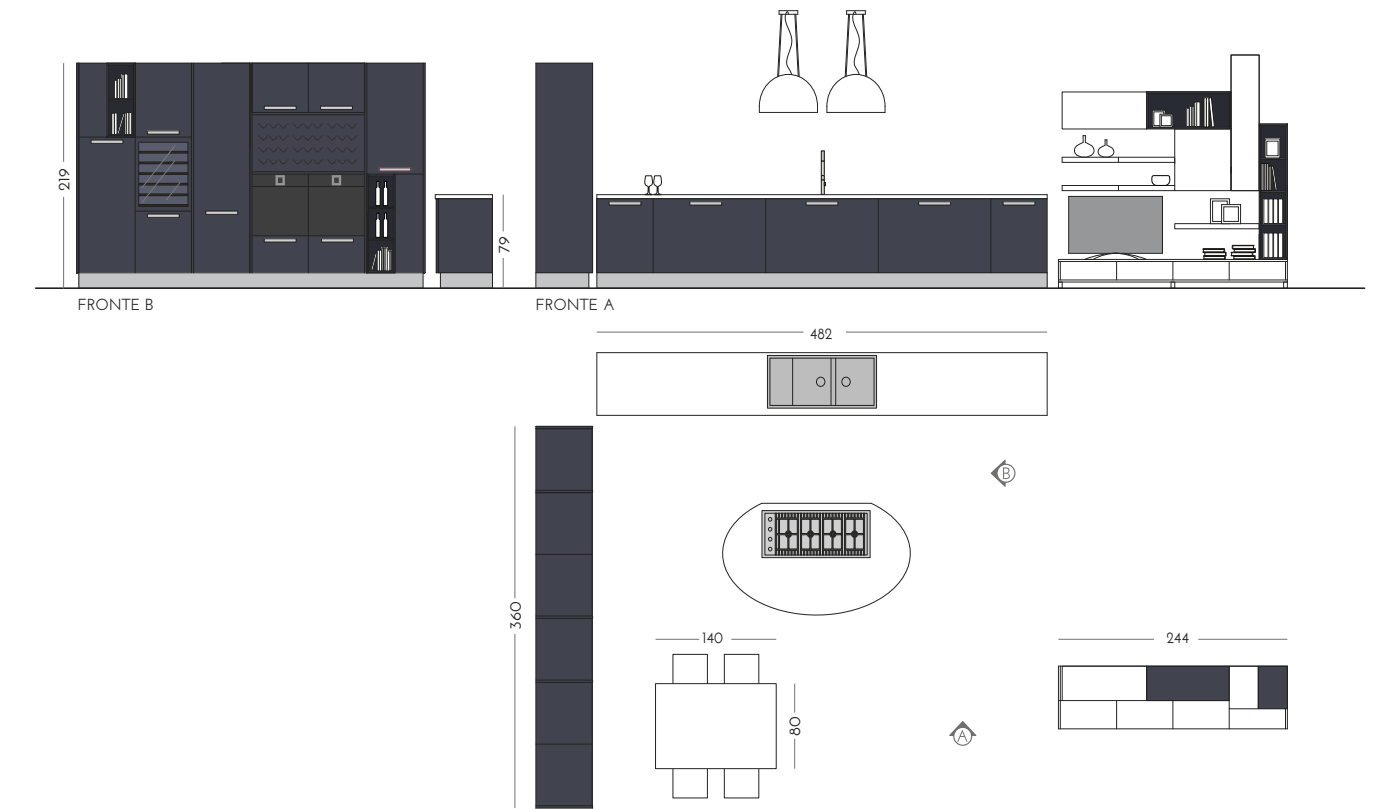
ISOLA

COMPOSIZIONE CON MOBILE ISOLA ELLITTICO CON 4 MENSOLE SAGOMATE LATERALI E POGGIAPIEDI, COMPLETATA DA BASI, COLONNE ATTREZZATE E LIVING.

LAYOUT WITH ELLIPTICAL ISLAND WITH 4 SHAPED SIDE SHELVES AND FOOT RAIL, COMPLETE WITH BASE UNITS, ACCESSORISED COLUMNS AND LIVING AREA.

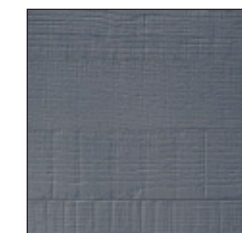


DIMENSIONI / DIMENSIONS

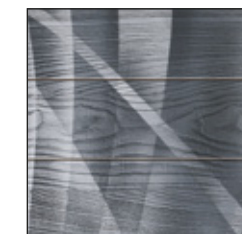


FINITURE / FINISHES

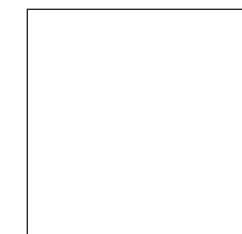
ANTA / DOOR



PLACCATA IN MASSELLO DI FRASSINO BLU PETROLIO
LAMINATED PETROLEUM BLUE SOLID ASH

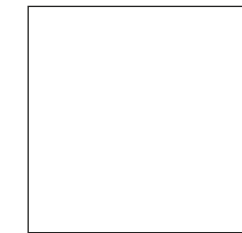


PLACCATA IN MASSELLO DI FRASSINO BLU PETROLIO CON PITTURA
LAMINATED PETROLEUM BLUE SOLID ASH WITH PAINTING



LACCATO BIANCO ASSOLUTO OPACO
LACQUERED MATT ABSOLUTE WHITE

TOP / WORKTOP



UNICOLOR BIANCO ASSOLUTO
UNICOLOR ABSOLUTE WHITE

SEDIA / CHAIR

SCARLETT



STRUTTURA CROMATA E DOGHE IN BIMATERIA BIANCO
/ CHROMED STRUCTURE AND WHITE BI-MATERIAL STRIPES

TAVOLO / TABLE

DAISY



IMPIALLACCIATO FRASSINO BIANCO
/ VENEERED WHITE ASH

SGABELLO / STOOL

SCARLETT



STRUTTURA CROMATA E DOGHE IN BIMATERIA BIANCO
/ CHROMED STRUCTURE AND WHITE BI-MATERIAL STRIPES

MANIGLIA / HANDLE

OPZ. 475C



FINITURA CROMO / CHROME FINISH





UNO STILE RAFFINATO PER QUESTO PROGETTO IN CUI LA CUCINA, AL CENTRO DELLA CASA, ESPRIME IL PIACERE DI VIVERE DI CHI CI ABITA.

A REFINED STYLE FOR THIS PROJECT IN WHICH THE KITCHEN, PLACED AT THE CENTRE OF THE HOME, REFLECTS THE PLEASURE OF LIVING OF THOSE WHO INHABIT IT.



LE MANIGLIE SONO DECORATIVE, PROPRIO
COME UN GIOIELLO, ED ESALTANO LA
BELLEZZA DELLE ANTE DOGATE.

THE HANDLES ARE DECORATIVE - JUST LIKE A
JEWEL - AND ENHANCE THE BEAUTY OF THE
STRIPED DOORS.



08

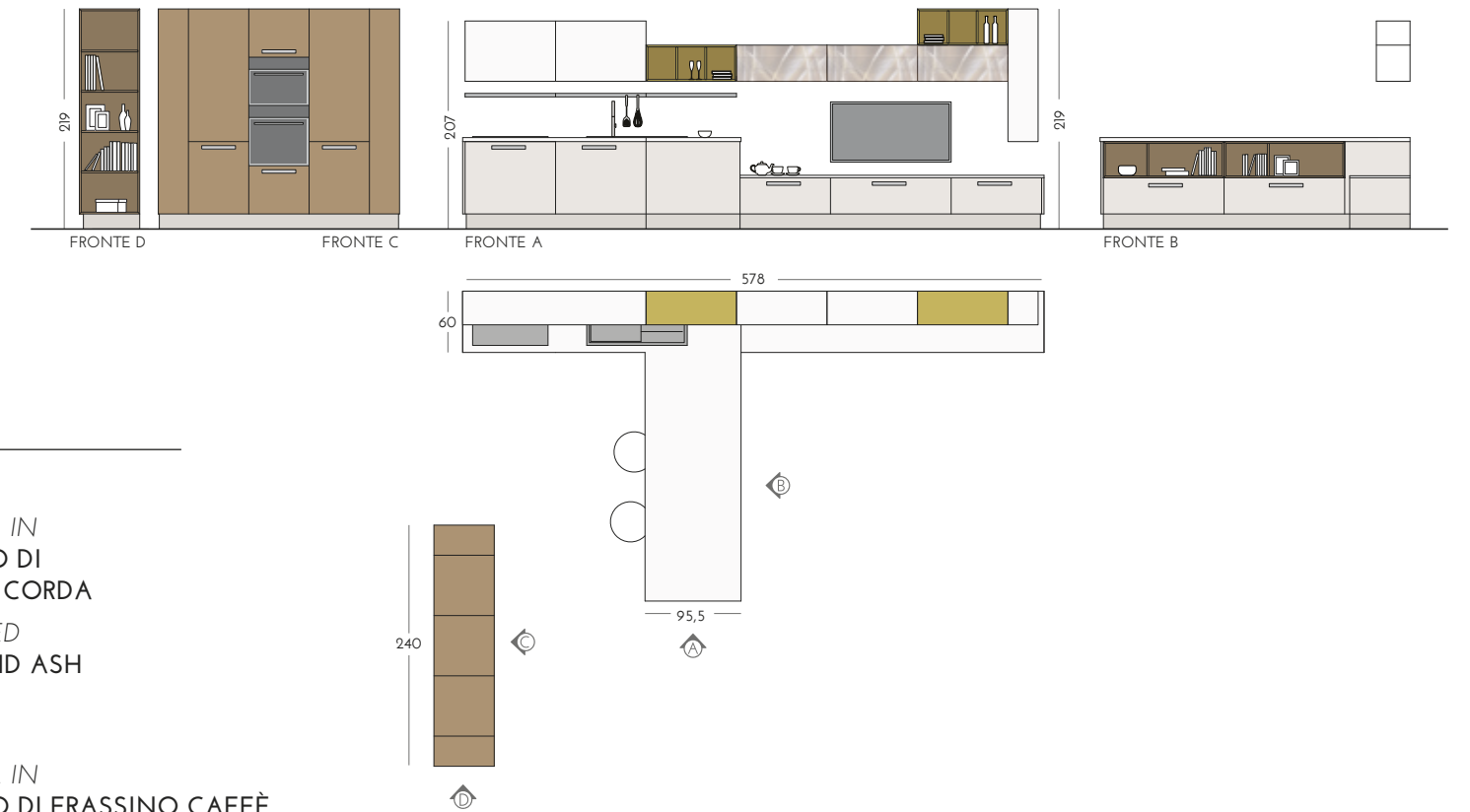
PENISOLA

COMPOSIZIONE A PENISOLA INTEGRATO LIVING CON BASI E VANI A GIORNO, COMPLETATA DA COLONNE CON ELETTRODOMESTICI.

PENINSULA LAYOUT WITH INTEGRATED LIVING AREA AND BASE UNITS WITH OPEN COMPARTMENTS, COMPLETE WITH COLUMNS WITH INTEGRATED APPLIANCES.



DIMENSIONI / DIMENSIONS

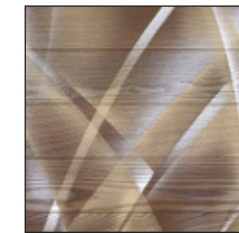


FINITURE / FINISHES

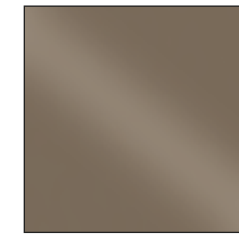
ANTA / DOOR



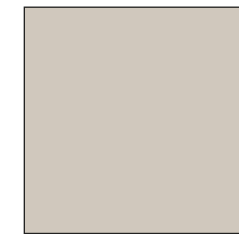
PLACCATA IN MASSELLO DI FRASSINO CORDA
LAMINATED CORD SOLID ASH



PLACCATA IN MASSELLO DI FRASSINO CAFFÈ CON PITTURA
LAMINATED COFFEE SOLID ASH WITH PAINTING

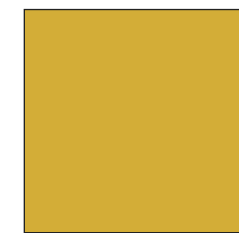


LACCATO CAFFÈ LUCIDO
LACQUERED GLOSSY COFFEE



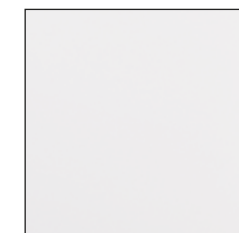
LACCATO TORTORA OPACO
LACQUERED MATT DOVE GREY

ELEMENTI A GIORNO / OPEN UNITS



LACCATO GIALLO AMBRA OPACO
LACQUERED MATT AMBER YELLOW

TOP / WORKTOP



LAMINATO PANNA FINITURA CRISTAL ABS 1
LAMINATED PANNA CRISTAL FINISH ABS 1

SGABELLO / STOOL

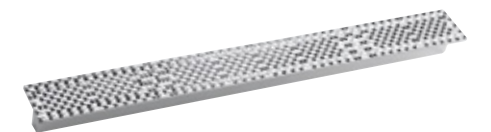
AMBRA



STRUTTURA IN METALLO CROMATO, SCOCCA LACCATA BIANCO ASSOLUTO OPACO / CHROMED METAL STRUCTURE, LACQUERED MATT ABSOLUTE WHITE BODY

MANIGLIA / HANDLE

OPZ. 495



FINITURA CROMO CON BASSORILIEVI / CHROME FINISH WITH RELIEF





LE COLONNE TERMINALI A GIORNO DONANO UN TOCCO DI COLORE E PARTICOLARITÀ ALLO SPAZIO RIUSCENDO A CONTENERE TANTI OGGETTI UTILI IN CUCINA.

THE OPEN END COLUMNS ADD A TOUCH OF COLOUR AND ORIGINALITY TO THE SPACE AND ARE CAPABLE OF HOUSING A NUMBER OF USEFUL OBJECTS FOR THE KITCHEN.

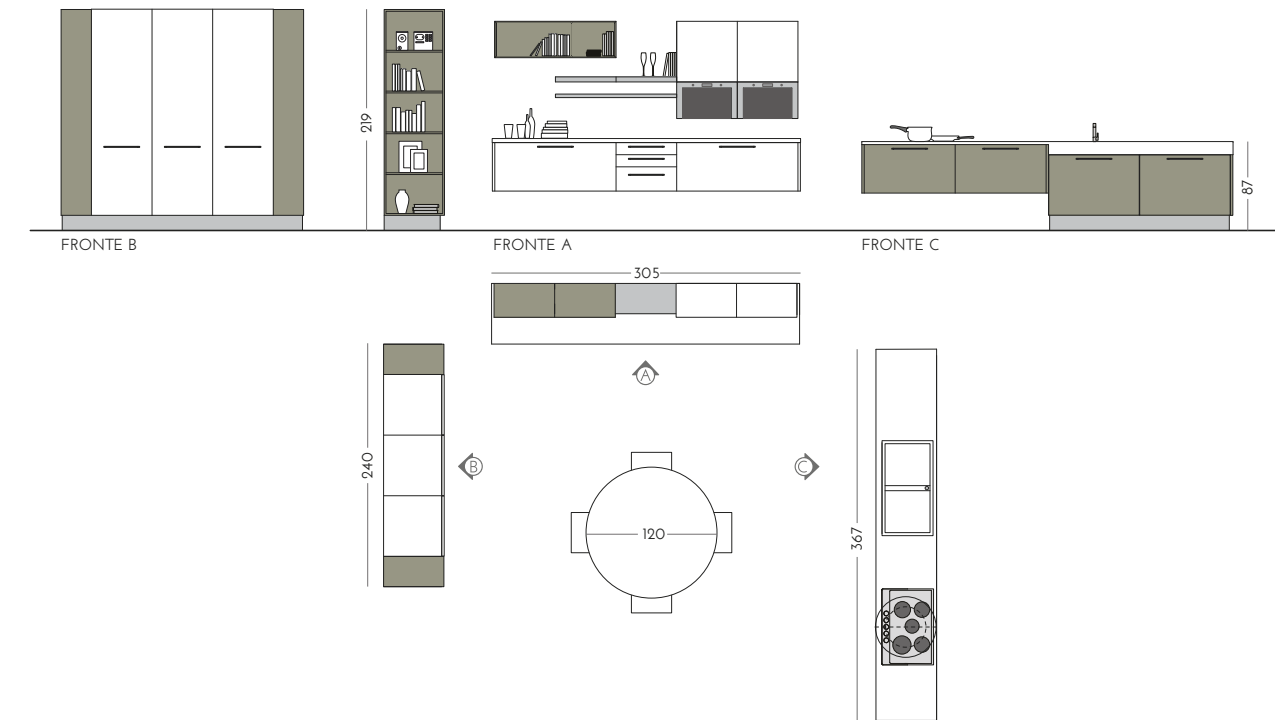


COMPOSIZIONE A GOLFO CON PENSILI SOSPESI ATTREZZATI E BASE CON PIANO COTTURA E LAVELLO, COMPLETATA DA COLONNE ATTREZZATE CON TERMINALI A GIORNO.

BAY LAYOUT WITH ACCESSORISED SUSPENDED WALL UNITS AND BASE UNITS WITH HOB AND SINK, COMPLETE WITH ACCESSORISED COLUMN SECTIONS WITH OPEN END UNITS.



DIMENSIONI / DIMENSIONS



FINITURE / FINISHES

ANTA / DOOR

PLACCATA IN MASSELLO DI FRASSINO BIANCO
LAMINATED WHITE SOLID ASH

LACCATO VERDE LICHENE LUCIDO
LACQUERED GLOSSY LICHEN GREEN

VETRO BIANCO NEVE LUCIDO
GLASS GLOSSY SNOW WHITE

ELEMENTI A GIORNO / OPEN UNITS

LACCATO VERDE LICHENE OPACO
LACQUERED MATT LICHEN GREEN

TOP / WORKTOP

CORIAN GLACIER WHITE 301
CORIAN GLACIER WHITE 301

SEDIA / CHAIR

AMBRA



STRUTTURA IN METALLO CROMATO, SCOCCA LACCATA BIANCO ASSOLUTO OPACO / CHROMED METAL STRUCTURE, MATT ABSOLUTE WHITE LACQUERED BODY

TAVOLO / TABLE

SATURNO



BASAMENTO BIANCO OPACO E TOP TESTURIZZATO SOFT COLORE BIANCO / MATT WHITE BASE AND SOFT-TEXTURED WHITE-COLOURED TOP

MANIGLIA / HANDLE

OPZ. 551



FINITURA CROMO / CHROME FINISH







UNA COMBINAZIONE DI PENSILI E
MENSOLE, CHIARI E SCURI, VUOTI E PIENI
PER IL MOBILE LATERALE CHE ALLARGA
L'AMBIENTE CUCINA.

A COMBINATION OF WALL UNITS AND
SHELVES - MINGLING LIGHT AND DARK, FULL
AND EMPTY SPACES - FOR A SIDE CABINET
THAT EXPANDS THE KITCHEN ENVIRONMENT.



10

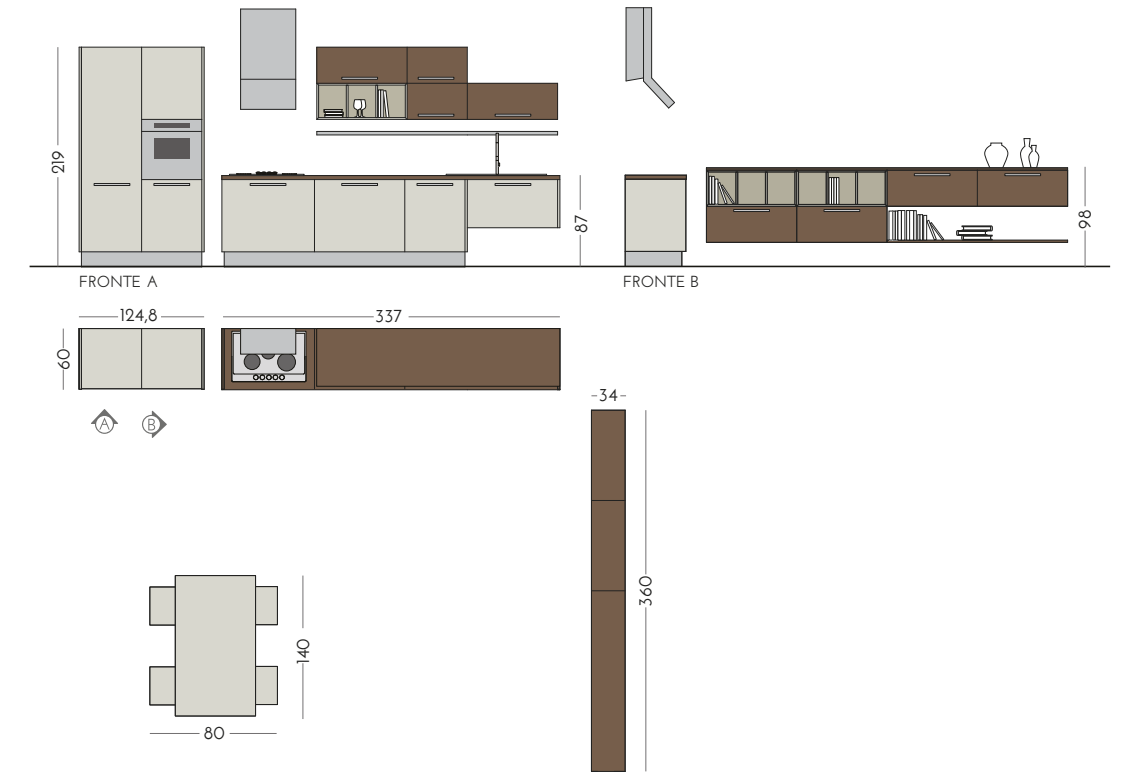
LINEA

COMPOSIZIONE LINEARE CON PIANO COTTURA E LAVELLO, PENSILI E VANI A GIORNO, COMPLETATA DA COLONNE ATTREZZATE.

LINEAR COMPOSITION WITH HOB AND SINK, WALL UNITS AND OPEN UNITS, COMPLETE WITH ACCESSORISED COLUMN UNITS.

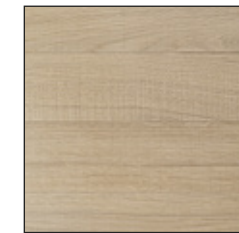


DIMENSIONI / DIMENSIONS



FINITURE / FINISHES

ANTA / DOOR



PLACCATA IN MASSELLO DI ROVERE NATURALE
LAMINATED NATURAL SOLID OAK



LACCATO CAFFÈ OPACO
LACQUERED MATT COFFEE

TOP / WORKTOP



LAMINATO CAFFÈ H4
FINITURA CRISTAL ABS I
LAMINATED COFFEE H4
CRISTAL FINISH ABSI

SEDIA / CHAIR

EIDER



IMPIALLACCIATO ROVERE NATURALE
/ VENEERED NATURAL OAK

TAVOLO / TABLE

DAISY



IMPIALLACCIATO ROVERE NATURALE
/ VENEERED NATURAL OAK

MANIGLIA / HANDLE

OPZ. 562S



FINITURA SATINATA
/ SATIN FINISH





PIANI SFALSATI, DI DIVERSO SPESSORE E DI DIVERSA FINITURA PER CREARE UN PROGETTO CUCINA UNICO E DI DESIGN.

STAGGERED LEVELS OF DIFFERENT THICKNESS AND FINISHES TO CREATE A UNIQUE, DESIGN-ORIENTED KITCHEN CONCEPT.





FORTI CONTRASTI FRA LA MATERICITÀ DEL FRASSINO CAFFÈ E L'ELEGANZA DEL VETRO SILVER KING BRONZO. I DETTAGLI DELL'ANTA DOGATA DISEGNANO UNA CUCINA DAL CARATTERE ARTIGIANALE.

STRONG CONTRASTS BETWEEN THE TEXTURES OF COFFEE ASH AND THE ELEGANCE OF SILVER KING BRONZE GLASS. THE DETAILS OF THE SLATTED DOOR HIGHLIGHT THE CRAFTSMANSHIP ON DISPLAY IN THE ENTIRE KITCHEN.





ORGANIZZARE LO SPAZIO NON È MAI STATO COSÌ FACILE, CON GLI ACCESSORI INTERNI PER I CASSETTI E PER I CESTONI. PRATICITÀ ED ESTETICA PER UNA CUCINA BELLA E RAZIONALE.

ORGANISING SPACE HAS NEVER BEEN SO SIMPLE, THANKS TO THE INTERNAL ACCESSORIES FOR THE DRAWERS AND DEEP DRAWERS. PRACTICALITY COMBINES WITH AESTHETIC APPEAL TO YIELD A BEAUTIFUL, RATIONAL KITCHEN.



11

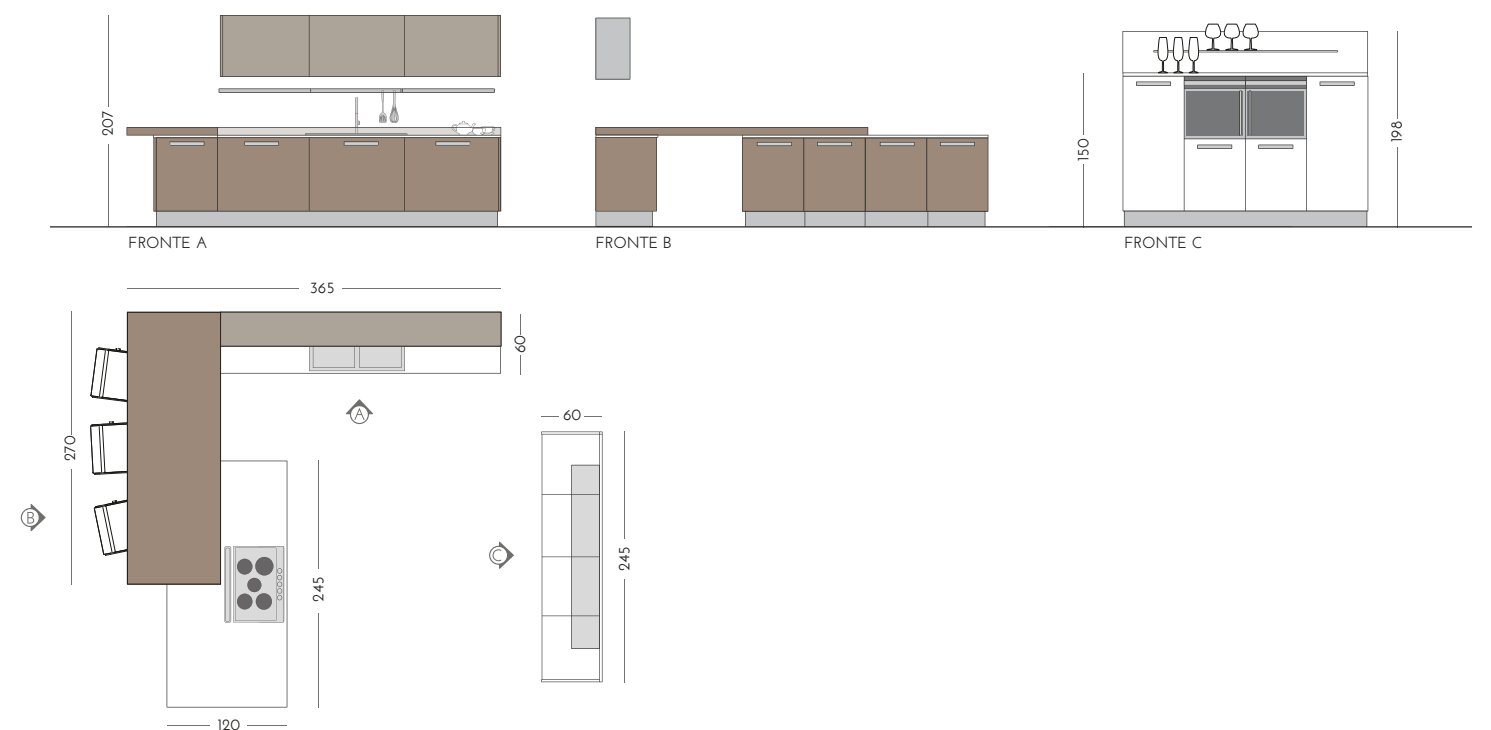
PENISOLA

COMPOSIZIONE A PENISOLA CON TOP SNACK SFALSATI, PIANO COTTURA, PENSILI IN VETRO E COLONNE ATTREZZATE.

PENINSULA LAYOUT WITH STAGGERED SNACK COUNTER, HOB, GLASS WALL UNITS AND ACCESSORISED COLUMN UNITS.



DIMENSIONI / DIMENSIONS

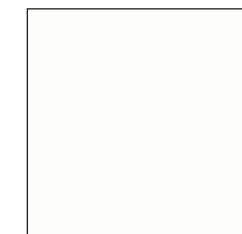


FINITURE / FINISHES

ANTA / DOOR



PLACCATA IN MASSELLO DI FRASSINO CAFFÈ
LAMINATED COFFEE SOLID ASH



LACCATO BIANCO ASSOLUTO OPACO
LACQUERED MATT ABSOLUTE WHITE



VETRO SILVER KING BRONZO
GLASS SILVER KING BRONZO

TOP / WORKTOP



BETACRYL CLASSIC WHITE
BETACRYL CLASSIC WHITE

SGABELLO / STOOL

PITAGORA



STRUTTURA CROMATA, SEDUTA E SCHIENALE IN SIMILPELLE COLORE BIANCO
/ STRUCTURE WITH CHROME FINISH, SEAT AND BACK IN WHITE-COLOURED IMITATION LEATHER

SGABELLO / STOOL

SCARLETT



STRUTTURA METALLO, CROMATA E DOGHE IN BIMATERIA MOKA + TRASPARENTE
/ CHROMED STRUCTURE AND WHITE BI-MATERIAL STRIPES MOCHA + TRANSPARENT

MANIGLIA / HANDLE

OPZ. 562V



FINITURA VISONE / MINK FINISH



LE FINITURE DI **adele**^{project}

I CAMPIONI E I COLORI RIPRODOTTI SONO PURAMENTE INDICATIVI ,
LA RAPPRESENTAZIONE IN STAMPA PUÒ ALTERARE LE TONALITÀ DEI COLORI.

THE SAMPLES AND ILLUSTRATED COLOURS ARE MERELY INDICATIVE,
REPRESENT THE TRUE COLOUR TONES.

PLACCATE IN MASSELLO
LAMINATED SOLID WOOD



FRASSINO BIANCO
WHITE ASH



FRASSINO CORDA
CORD ASH



FRASSINO TERRA
EARTH BROWN ASH



FRASSINO VISONE
MINK ASH



FRASSINO BLU PETROLIO
PETROLEUM BLUE ASH



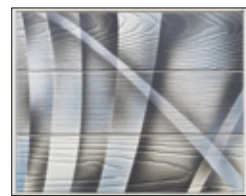
FRASSINO CAFFÈ
COFFEE ASH



ROVERE NATURALE
NATURAL OAK

IMPIALLACCIATO CON PITTURA A MANO
VENEERED WITH HAND PAINTING

OGNI ANTA È DA CONSIDERARSI PEZZO UNICO, FIRMATO ED AUTENTICATO DALL'AUTORE.
EACH DOOR IS CONSIDERED AS A SINGLE PIECE, SIGNED AND CERTIFIED BY THE DESIGNER.



FRASSINO BIANCO CON PITTURA ASTRATTA E
RELATIVE SFUMATURE
WHITE ASH WITH ABSTRACT PAINTING AND
RELATIVE SHADES



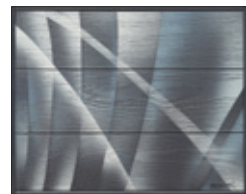
FRASSINO CORDA CON PITTURA ASTRATTA E
RELATIVE SFUMATURE
JUTE ASH WITH ABSTRACT PAINTING AND
RELATIVE SHADES



FRASSINO VISONE CON PITTURA ASTRATTA E
RELATIVE SFUMATURE
MINK ASH WITH ABSTRACT PAINTING AND
RELATIVE SHADES



FRASSINO TERRA CON PITTURA ASTRATTA E
RELATIVE SFUMATURE
EARTH BROWN ASH WITH ABSTRACT
PAINTING AND RELATIVE SHADES



FRASSINO BLU PETROLIO CON PITTURA
ASTRATTA E RELATIVE SFUMATURE
PETROLEUM BLUE ASH WITH ABSTRACT
PAINTING AND RELATIVE SHADES

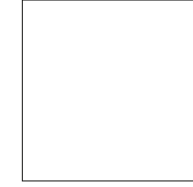


FRASSINO CAFFÈ CON PITTURA ASTRATTA E
RELATIVE SFUMATURE
COFFEE ASH WITH ABSTRACT PAINTING AND
RELATIVE SHADES



ROVERE NATURALE CON PITTURA ASTRATTA E
RELATIVE SFUMATURE
NATURAL OAK WITH ABSTRACT PAINTING
AND RELATIVE SHADES

COLORI TESTURIZZATI SOFT / COLORI LUCIDI SPAZZOLATI
SOFT TEXTURED COLOURS / GLOSSY BRUSHED COLOURS



BIANCO ASSOLUTO
ABSOLUTE WHITE



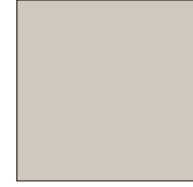
BIANCO NEVE
SNOW WHITE



AVORIO
IVORY



CAMOSCIO
DEERSKIN



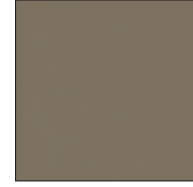
TORTORA
DOVE GREY



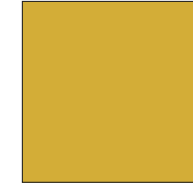
CAPPUCCINO
CAPPUCCINO



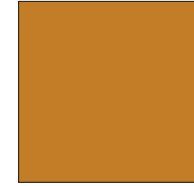
VISONE
MINK



CAFFÈ
COFFEE



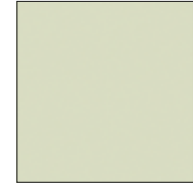
GIALLO AMBRA
AMBER YELLOW



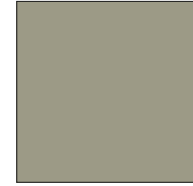
MANDARINO
MANDARIN



LIME
LIME



VERDE PROVENZA
PROVENCE GREEN



VERDE LICHENE
LICHEN GREEN



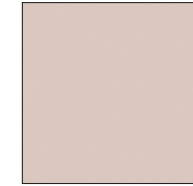
CENERE
ASH



GRIGIO ARGENTO
SILVER GREY



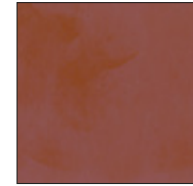
TITANIO
TITANIUM



ROSA QUARZO
QUARTZ PINK



ROSSO
RED



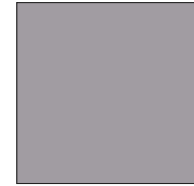
ROSSO TOSCANO
TUSCAN RED



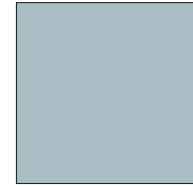
RUBINO
RUBY



PRUGNA
PLUM



LAVANDA
LAVENDER



CARTA DA ZUCCHERO
ROBIN'S-EGG BLUE



BLU LAGUNA
LAGOON BLUE



BLU AVIAZIONE
AVIATION BLUE



BLU YOUNG
YOUNG BLUE



LAVAGNA
SLATE GREY

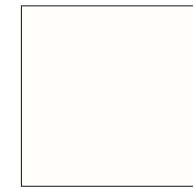


COLORE A
CAMPIONE RAL
RAL SAMPLE COLOUR



COLORE CON
MAGGIORAZIONE DEL 5%
BIANCO MADREPERLA LUCIDO
LACQUERED COLOURS
WITH 5% SURCHARGE
GLOSSY WHITE MOTHER OF PEARL

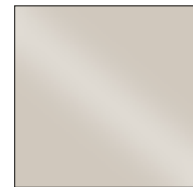
COLORI VETRI LUCIDI E SATINATI
GLOSSY AND SATIN GLASS COLOURS



BIANCO NEVE
SNOW WHITE



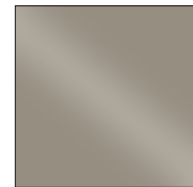
AVORIO
IVORY



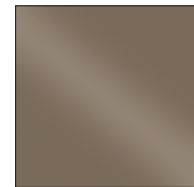
TORTORA
DOVE GREY



CAPPUCCINO
CAPPUCCINO



VISONE
MINK



CAFFÈ
COFFEE



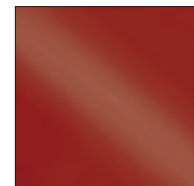
AMBRA
AMBER



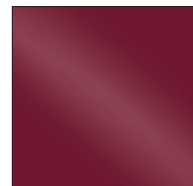
LIME
LIME



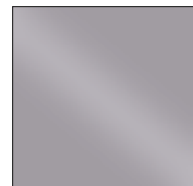
VERDE LICHENE
LICHEN GREEN



ROSSO CHIARO
LIGHT RED



RUBINO
RUBY



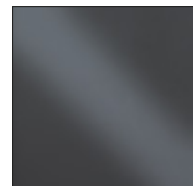
LAVANDA
LAVENDER



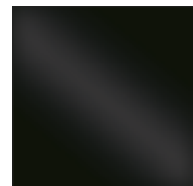
BLU AVIAZIONE
AVIATION BLUE



BLU YOUNG
YOUNG BLUE



LAVAGNA
SLATE GREY



NERO ASSOLUTO
ABSOLUTE BLACK

COLORI VETRO LUCIDO
GLOSSY GLASS COLOUR



SILVER KING
BRONZO
BRONZE SILVER
KING

PROGETTO E COORDINAMENTO:

UFFICIO R&S: CARLO SACCHI, ARCH. EURO MARINUCCI

UFFICIO MKT: NADIA DEL PUPO

"LUBE SERVICE & ENGINEERING S.R.L."

ART DIRECTION E PROGETTO GRAFICO: STUDIO FERRIANI

FOTOGRAFIA: STUDIO EMOZIONI, FOTOGRAF

DIGITAL PHOTOGRAPHY: CDPRESS, STUDIO FERRIANI, DELTA TRACING

SELEZIONI E STAMPA: CDPRESS

I CAMPIONI E I COLORI RIPRODOTTI SONO PURAMENTE INDICATIVI,
LA RAPPRESENTAZIONE IN STAMPA PUÒ ALTERARE LE TONALITÀ DEI COLORI.

THE SAMPLES AND ILLUSTRATED COLOURS ARE MERELY INDICATIVE,
REPRESENT THE TRUE COLOUR TONES.



LUBE INDUSTRIES SRL
Via dell'Industria, 4 - 62010 Treia (MC) Italia
Tel. centralino 0733 8401 (r.a.)
Fax 0733 840222 - 0733 840333
info@cucinelube.it - www.cucinelube.it

Il sistema di gestione per la qualità Lube è certificato UNI EN ISO 9001:2008
Pannello ecologico garantito 100% legno riciclato